

Starting school



A guide for parents with children starting primary school in September 2025



Apply online:
**[www.lbhf.gov.uk/
eadmissions](http://www.lbhf.gov.uk/eadmissions)**

The Pan-London eAdmissions site opens
on 1 September 2024.

If your child was born between 1 September
2020 and 31 August 2021, you will need to
apply for a primary (reception) school place
by 15 January 2025.

Contents

Introduction

- 4 Welcome**
- 5 About primary school admissions**
- 5 Introduction to Hammersmith & Fulham's primary schools
- 5 Types of state school
- 5 Contacting the admissions team
- 6 Pan-London system
- 7 Key dates**
- 8 Before you apply**
- 8 Gathering information
- 8 Considering the facts
- 9 Applying for schools outside Hammersmith & Fulham
- 9 Private fee-paying schools

The application process

- 11 The information you need**
- 11 Closing date for applications
- 11 Proof of address
- 13 Change of address/preferences
- 13 Children Looked After and previously Children Looked After (England and Wales)
- 14 Exceptional need
- 14 Additional forms to complete
- 14 Applications for children living abroad
- 14 Members of the UK Armed Forces and Crown Servants
- 15 Late applications
- 15 Change of preferences
- 16 Requests to apply for reception in the following year
- 16 Use of your personal information
- 16 Fraudulent applications
- 17 Completing your application**
- 17 Guidance on completing your application (paper or online)
- 19 Apply online and save time
- 19 You can apply online in five easy steps
- 20 A step-by-step guide to applying online**
- 22 What will happen next**

- 22 How decisions are made
- 23 Notifying you of the outcome
- 24 Waiting lists
- 24 Appeal arrangements
- 25 Making final arrangements for starting school
- 26 Frequently asked questions**

School information

- 28 Common definitions
- 30 Community schools
- 56 Academies, free schools and voluntary aided schools

Additional information

- 114 Support services**
- 114 Family Hubs
- 114 Children with an EHC plan
- 114 Support for school attendance
- 114 In-year admissions
- 115 Disabled Children's Team
- 115 Family Information Service (FIS)
- 115 Educational Psychology Service
- 115 Assistance with home-to-school travel
- 116 Free school meals and school clothing grants

Nurseries and early years

- 118 Starting nursery school in H&F**
- 118 Information and how to apply
- 118 How places are allocated
- 118 Community nursery schools and early years centres

Locations and contacts

- 120 Other authorities
- 120 Contact details for diocesan authorities
- 120 Contacting neighbouring boroughs
- 121 Contact details for neighbouring boroughs
- 122 H&F schools, nurseries and early years centres
- 122 School locations
- 125 H&F borough map

Welcome

Dear Parents and Carers

Starting at primary school is a huge milestone in every child's life. So, to help you make a decision about which school is the best fit for your family we have put together this *Starting school* information guide, along with our *Hints and tips* booklet.

Choosing a primary school is an enormous decision and we're so pleased that, along with many other local families, you're thinking of sending your child to one in Hammersmith & Fulham. As your child becomes part of our local schools' community, we hope you'll get involved in supporting their learning and maintaining high standards of work and behaviour.

We have excellent schools here. We are proud that all of them are currently (August 2024) rated as good or outstanding by Ofsted. Our teachers and school staff work hard not only to attain impressive standards, but to ensure that every child is fully supported with their development and well-being. Competition for places is high, but I'm confident that there is a local primary school in Hammersmith & Fulham that can inspire your child to achieve their best while enjoying a vibrant school community.

Before you make your choices, I'd recommend taking some time to visit our local schools, as every primary school will have something different to offer, and what is right for one child may not be right for another. Open evenings and mornings give you a valuable opportunity to get a feel for the school and meet the headteacher, staff and current students. Dates and times of the open evenings and mornings for each school are in this brochure and online.

We recognise that this can be both an exciting but sometimes daunting few months, especially for those parents who are going through the process for the first time. We really hope you find the information about the borough's schools and the advice on how to apply helpful. May I wish you, and all children starting primary school in Hammersmith & Fulham the very best for the future and look forward to welcoming you at one of our schools soon.

With very best wishes,



Councillor Alex Sanderson

Cabinet Member for Children and Education
Hammersmith & Fulham Council



Introduction

About primary school admissions

Introduction to Hammersmith & Fulham's primary schools

This brochure is for parents of pupils aged between three and 11, but deals mainly with issues for parents whose children are due to start primary school in 2025. It provides information about how and when to apply for a place, explains how admission decisions are made and gives information about each school to help parents decide which schools to apply for.

All other schools in the borough providing primary or nursery education are either independent (private) schools or run by other organisations that may charge fees. The council's Family Information Service provides details of all provision in the area and can be contacted by visiting www.lbhf.gov.uk/fisd, emailing fis@lbhf.gov.uk or calling 0845 313 3933.

Further information on independent schools is available from the Independent Schools Directory and Resource at www.independentschools.co.uk and the Independent Schools Council at www.isc.co.uk

Types of state school

From September 2024, there will be 12 community schools, 13 voluntary aided schools, 8 academies, 3 free schools and 1 voluntary aided junior school.

The Admission Authority for each school is responsible for setting its admission arrangements and deciding which children are given priority for a place, in accordance with the published admission criteria. For community schools the Admission Authority is the local council, while for voluntary aided schools, academies and free schools it is the school's governing body or academy trust.

Community schools are financed by public money and maintained by the council, which also sets their admission requirements.

Voluntary aided schools are set up by a religious or voluntary body but funded through the council. Governors have responsibilities in addition to those for community schools, including setting the admissions arrangements.

Academies and free schools are independent of the local authority and funded directly by central government. The governing body for each academy and free school sets its admission arrangements in agreement with the secretary of state and the local council.



Contacting the admissions team

3rd Floor
145-155 King Street
London W6 9XY

✉ school.admissions@lbhf.gov.uk

🌐 www.lbhf.gov.uk/schooladmissions

☎ 020 8753 1085

Lines are open Monday to Friday
9am to 1pm

Introduction

About primary school admissions

Pan-London system

Every year around 100,000 applications across London are made for primary school reception places. All 33 London boroughs, together with councils bordering the capital, co-ordinate admissions to their primary schools.

The co-ordinated admissions system is fairer and means more parents are offered one of their preferred schools at an earlier stage and fewer parents receive no initial offer at all. It is also easier for parents to manage, reducing anxiety for you and your children.

How the system works

Under the Pan-London Co-ordinated Admissions System (PLCAS), all parents must list the schools they want to apply for on their home local authority's common application form, ranking them in order of preference. This is important, as potentially only one offer will be made and this will be for the highest-ranked school able to make the offer. This form (either paper or online) is returned to the local authority for the area in which the child lives.

The local authorities taking part in the PLCAS then use a secure computerised system to pass on details of the applications for schools in other areas. They will also co-ordinate the offer of places to make sure no child is offered more than one school place. The decision on whether a place can be offered will continue to be made by the Admission Authority for each school. When a school receives more applications than places available (also referred to as oversubscribed), its published admissions criteria will be used to decide the order in which applicants will be offered places.

Schools will not be informed of where they are listed on the application form or other schools applied for.


Where a child is eligible to be offered a place at more than one school, the local authority will hold the offer for the highest preference on the parents' form and release all other lower preference offers. These places can then be offered to other applicants. Potential offers are exchanged between local authorities until they are in a position to make the single best offer to parents using all available places. All offers will be made on the same day: **16 April 2025**.



Introduction

Key dates

From 1 September 2024

You will be able to apply online at:
www.lbhf.gov.uk/eadmissions 

Paper applications will be available from the admissions team on request.

The *Starting school* brochure will be available online from early September.

15 January 2025

Closing date for applications.

If you are applying online, you will have up until 11.59pm on 15 January 2025 to submit your application.

If you are applying via a paper form you will need to ensure it is received by the admissions team by 5pm on the closing date.

16 April 2025

National offer day.

All resident applicants that applied online will receive an email notification during the evening of 16 April.

Resident applicants who made a paper application will be sent an outcome letter in the post on 17 April, unless they provided an email address in which case they will receive an email as well.

30 April 2025

Deadline for successful applicants to accept or decline their school offer.

From 15 May 2025

Waiting list positions will be available for community schools and further offers will be made as result of withdrawals and late applications for schools with vacancies.

28 May 2025

To ensure appeals are heard by the end of the summer term, appeals for Hammersmith & Fulham community schools must be lodged by this date.

You will need to check with voluntary aided schools and academies as deadline dates may vary.

June/July 2025

Appeals for Hammersmith & Fulham community schools are heard by an independent panel.

Voluntary aided schools and academies will also arrange for appeals to be heard before the end of term.


Introduction

Before you apply

Gathering information

To make an informed decision about which primary schools to apply for, you are advised to read the information about the schools in this brochure and research the schools you are interested in applying to.

You are advised to:

- Contact schools you are interested in directly to ask for a copy of their prospectus, which will provide you with detailed information.
- Visit schools' own websites to find out more detailed information. If you want to find out about Ofsted reports for Hammersmith & Fulham schools visit www.ofsted.gov.uk 
- Find out if the school has arranged open day sessions so you can plan a visit. Some schools have indicated specific dates they have arranged, this information can be found in the individual school section of this brochure on pages 27 to 112.

Considering the facts

Many schools receive more applications than they have places. To avoid disappointment you should consider whether your child has a realistic chance of gaining a place at your preferred school/schools.

You will need to look at:

- How many applications were made for your preferred school/schools last year compared to how many places were available. This information can be found in the individual school section of this brochure on pages 27 to 112. It is important to note the pattern of admissions can vary from year to year and living within the distance in which places were offered in a previous year does not guarantee a place will be offered in this year or future years.
- The admission criteria of the school/schools. The criteria will determine the order of priority for each applicant. As an example, church schools will prioritise applicants who meet the respective faith criteria.

You may also like to consider:

- Whether the ethos of the school suits your child's needs.
- Whether the school has a breakfast club and/or after-school provision if this is important to you.
- How your child will travel to school. There are many primary schools in Hammersmith & Fulham, all accessible by walking or by bus. You may also want to consider schools in neighbouring boroughs that may be close to your home. Remember you can name up to six school preferences.
- You should note attendance at a nursery class does not guarantee or give priority for admission to the reception class of that school. It is also important to be aware if you have a younger child attending the nursery section of the school you are applying to, sibling connection does not apply. Only children who will be on the roll of the main school when the new child starts school will be considered as a sibling link.
- Naming only the school you most want for your child will not increase their chance of being offered a place at that school.
- If we receive more than one application form for your child, the most recently dated form will be the one we process.

Because of the demand for places at the most popular schools, your child may not be offered a place at your first preference.

Listing only one preference could result in your child not receiving an offer at all on 16 April 2025. It is therefore advisable to name further school choices, and those you consider to be realistic options, that could increase the chance of an offer being made.

Introduction

Before you apply

Applying for schools outside Hammersmith & Fulham

You may also wish to consider schools outside the borough. Under the PLCAS, Hammersmith & Fulham residents can apply for schools anywhere in London and will need to be listed in your application. Detailed information about schools outside the borough is available directly from the schools and from the local authority for the area in which they are located.

The contact details for neighbouring London boroughs are provided on pages 120 to 121.

Private fee-paying schools

Further information on private or independent schools is available from the Independent Schools Directory and Resource at www.independentschools.co.uk and the Independent Schools Council at www.isc.co.uk

You will usually be required to pay fees to attend these schools. These schools do not form part of the PLCAS and you must apply to them directly.




The application process



The application process

The information you need

Closing date for applications

The closing date for applications is 15 January 2025. For all the reasons detailed on page 19 it is highly recommended you apply online at: www.lbhf.gov.uk/eadmissions 

If you would prefer to complete a paper form, you must return it by the closing date to the address shown on the form. If you would like confirmation we have received your application, please indicate this when you submit the form. Make sure you use the correct postage if you return your form through the post. Incorrect postage may delay your application, preventing it from reaching the admissions team by the closing date.

Proof of address

The child's home address provided on your application must be your child's current permanent place of residence on close of application, **15 January 2025**.

You must not use a business address, childminder's or relative's address or any address other than your home address. Only in circumstances where the relative or carer has legal guardianship and is the main carer will a different address be considered as the main residence. Evidence will be requested to support this arrangement.

We will not accept possible future addresses as a basis for allocating school places. If you move after submitting your application, you must inform the admissions team within two weeks of your move so that your application is considered using the correct address for school admission purposes. Any change of address will not be updated until proof has been provided and if you move after **11 February 2025**, your address will not be updated as the process for allocating places would have already started.

Every year there are cases where parents give false information about their home address to get a place at a school. Every effort is made to ensure that this does not happen because this can prevent genuine applicants from obtaining a school place. We will carry out address verifications against local authority records for all applications made by residents of the London Borough of Hammersmith & Fulham.

Where we are not satisfied as to the validity of an address or we consider this be an address of convenience, further investigations will be conducted.

The local authority reserves the right to seek verification of the information parents have given on the application form and withdraw any offer or application made based on inadequate, inaccurate or deliberately misleading information.

Any application found to have misleading information will be invalid and the applicant may be required to make a new application which will be processed as late if the invalid address was detected after the normal closing date of applications.

Address of convenience

An address of convenience is an address named on a school admissions application which is not your child's habitual residence, and which increases the priority that your child will receive for admission to their preferred schools. A child's habitual residence is the place where your child permanently resides and where your family normally lives at the time of application.

It is for the admission authority to determine if, on the balance of probability, the address given on an application is a child's habitual residence.

Some examples of the use of an address of convenience include but are not limited to the following:


- An applicant applies from an address where the child does not ordinarily reside. This includes a business address, a childminder's address or any other address including that of a family member or friend.
- A family purchases a new property or rents accommodation and uses this address to gain a school place, whilst continuing to own or rent an alternative property.
- A family owns a property which is or has previously been used as their home address and apply from another address in order to gain a school place, but still retains ownership of the initial property.
- A family moves to live with someone else, often a relative/friend/partner, and uses this address to gain a school place whilst continuing to own or rent an alternative property.

The application process

The information you need

We will not generally consider an address to be a child's habitual residence if the applicant owns or rents an alternative property that the child previously lived in. Where an applicant still owns or rents an address at which their child previously lived, they must explain and evidence the permanence of their house move. Renting out an owned property or putting it up for sale would not normally deem it unavailable to the family. A property would normally only be deemed unavailable to the family from the date it is sold but this would not alter the outcome of an application for a school place where the decision has already been made.

After consideration of the information provided, if we believe that an address of convenience has been used, the local authority will decide which address to use for allocating a school place.

The school admissions team do not have access to council tax database. You are therefore expected to submit along your application documentary evidence of your address in the form of current council tax record. If you are unable to provide this (or any other proof of address) at the time of submitting the common application form, you may email it to school.admissions@lbhf.gov.uk  quoting the application reference. If you are not registered to pay council tax, either because you are not liable or have recently moved, you will be asked to provide:

- A mortgage statement/tenancy agreement and **two** of the following:
 - Recent utility bill – gas/electricity/water/TV licence
 - Driving licence
 - Entitlement to benefits letter e.g. Child Benefit (pages 1 and 2)/Child Tax Credit/Housing Benefit/Income Support/Jobseekers' Allowance
 - Inland Revenue document
 - Pay slip/P45/P60 (not more than one of these)
 - Car/house insurance certificate
 - Electoral register
 - A letter confirming placement at your address from social services/National Asylum Support Service/United Kingdom Border Agency/housing department.

Any proof of address provided must show your full name and match the details provided at the time of application. Any supporting information not in English language must be accompanied by a certified translation.

If we are not satisfied with the documentation provided, we reserve the right to ask for additional evidence of the address used for your application.

Some parents have multiple council tax liabilities. The council reserves the right to and will investigate in such cases to determine which property the child actually resides and should be the application address.

Shared or joint residence

Where a child lives with parents with shared responsibility, each for part of a week, the address where the child lives is determined using a joint declaration from the parents stating the pattern of residence. If a child's residence is split equally between both parents, then parents will be asked to determine which residential address should be used for admission to school. If the residence is not split equally between both parents, then the address used will be the address where the child spends most of the school week.

Documentation to confirm the arrangement such as a residence order or other court order may be required. If this is not available or the admissions team is not satisfied with this documentation, Hammersmith & Fulham Council will consider the address of the parent who is in receipt of Child Benefit or if Child Benefit is not being received, the address at which the child is registered with a doctor (GP). You must therefore send us a copy of your latest benefit entitlement notice or your child's medical card. We may also ask for further evidence if required.

If an applicant is unable to provide proofs of address perhaps because they are not, for example, on council tax records or utility bills, the applicant must request the person who is on those records to write to school admissions to declare their joint residency and responsibility for the child. In some instances, school admissions may require the adults with responsibility to provide proof of this.

The application process

The information you need

Change of address/preferences

The admissions regulations do not permit applicants to change their preferences after **15 January 2025** unless they have moved to a new house. Updated preferences due to change of address can be accepted up to 5pm on **11 February 2025**.

Address changes can only be accepted if suitable new proof of address is provided, and your child is living at the new address by this date. Each case will be considered individually.

If you move after this date or an older child is admitted to one of your preferred schools, changes will not be made until after the offer date. All other new or changed preferences will only be considered after the offer date.

It is your responsibility to let us know about any changes which could impact your child's application for a primary school place within two weeks of the change. Failure to do so could result in your school place being withdrawn.

If you are considering a change we strongly advise you contact the admissions team on 020 8753 1085 or email school.admissions@lbhf.gov.uk 

Children Looked After and previously Children Looked After (England and Wales)

In the admission arrangements for all schools, Children Looked After and previously Children Looked After will be: a looked after child, as defined by Section 22(1) of the Children Act 1989, is a child who is (a) in the care of a local authority, or (b) being provided with accommodation by a local authority in the exercise of their social services functions for England and Wales. Priority is also given under this criterion for Children Looked After who ceased to be so because they:

- i) were adopted under Section 46 of the Adoption and Children Act 2002.
- ii) became subject to a child arrangement order under Section 8 of the Children Act 1989, as amended by s12 of the Children and Families Act 2014. Child arrangement orders replaced residence order and any residence order in force prior to 22 April 2014 is deemed to be a child arrangements order, which settles the arrangements to be made as to the person with whom a child is to live.
- iii) became subject to a special guardianship order under Section 14A of the Children Act 1989, which is an order appointing one or more individuals to be a child's special guardian/guardians.



The application process

The information you need

Exceptional need

All schools have experience in dealing with children with diverse needs. These may be educational, medical and/or social needs. However, in a very few exceptional cases there may be reasons why a child may need to attend a specific school, and no other school can meet this need.

If you feel there are exceptional reasons for your child to be considered for a priority placement at a particular school, you must indicate this in the area provided in your application, giving reasons supporting your case. Please be aware not all schools have this criterion in their policy, so it is advised you check this first.

All requests for priority consideration must be supported by a professional, such as a doctor or social worker, who must clarify which school you are making a special case for, the reason why it is necessary for your child to attend this school in particular and the difficulties it will cause your child to attend another school.

It is for you to decide how to support your case and what documents to provide, but these must be submitted by the closing date: **15 January 2025**.


The admissions team is not responsible for contacting professionals for information about your case and any decision will be based on documents you submit by the closing date.

For own Admission Authority schools and schools located in other areas, any additional documentation you provide will be passed on for the respective school's attention via the secure pan-London system.

The notification date is **16 April 2025**. You will not therefore be advised before this date whether your request for priority is agreed. If priority is not granted, your application will be considered against the remaining criteria for the requested school.

It is important to be aware very few cases are agreed under this category. The Admission Authority must be able to justify awarding priority for a child above other applicants. It will need to be agreed by those making the decision that the professional support provided clearly makes a case that the needs for the child can only be met at the school requested, as opposed to another local school.

Additional forms to complete

All Hammersmith & Fulham voluntary aided (church) schools have additional Supplementary Information Forms (SIF) and/or a Priest Reference Form to complete, which are available directly from the schools or at www.lbhf.gov.uk/schooladmissions 

These forms are necessary for the school governors to determine whether applicants meet their faith requirements or other criteria. If you are applying for a place on religious grounds, you will be required to provide proof of your church attendance and/or religious commitment on the SIF.

The SIF and all additional documents required must be returned to the school. The same will apply for church schools located in neighbouring local authorities.

If you name the school in your application and do not complete a SIF, your child will be considered but it will reduce the chances of your child being offered a place. The school will not have any information to consider when judging your application against its admission criteria and, as such, your application will be ranked very low when decisions are made. It is therefore important you complete both forms.

Applications for children living abroad

Applications submitted by resident families working or temporarily living abroad will be processed with all other applicants and must be submitted by the closing date. The address where the child is living at the time of application and at the closing date will be used for the purpose of processing. The applicant must inform the admissions team on their return for the address to be updated. Proof of address and occupancy will be required.

Members of the UK Armed Forces and Crown Servants

For members of the UK Armed Forces and Crown Servants an official letter confirming the address of your quarters is required. This can be provided before you have relocated to ensure your application is not disadvantaged.

The application process

The information you need

Late applications

If you apply after the closing date without a valid reason, your application will only be considered after the offer date: **16 April 2025**. Your child's name will be added to waiting lists along with those unsuccessful applications considered in the initial allocation round.

If there is an exceptional reason for applying after the closing date and **by 11 February 2025** (for example, you have just moved to the area), it may be possible to consider your application with those that were made on time. Other circumstances will be considered and each case decided on its own merit.

Examples of reasons that **would not** be accepted include failure of a nursery school to remind a parent to apply, late return from a family holiday or non-receipt of an application form due to postal issues. You are advised to contact the admissions team as soon as possible if submitting an application after the closing date.

Change of preferences

If you wish to change the order of preference of schools listed on your application form and you applied online, you can log back in to your account to change/add/delete preferences up until the closing date of **15 January 2025**.

If you did not apply online, you must email school.admissions@lbhf.gov.uk or write to the admissions team before the closing date.

It is not normally possible to accept any changes after the closing date. If you do want to add preferences or change your order of preferences after this date, you must inform the admissions team as indicated above.

In most cases, new or changed preference schools will normally be considered only after all other applications have been considered.



The application process

The information you need

Requests to apply for reception in the following year

Requests for an application to be considered for reception entry for the following year will need to be made by the closing date for when the child would normally be expected to apply: **15 January 2025**. This enables the application to still be processed alongside all other applications if the request for later admission is refused by an Admission Authority*.


Requests for admission outside of the child's chronological year of entry may be made by parents of children considered to be gifted or talented or children who have experienced problems such as ill-health. Additionally, parents of summer-born children may choose not to send their children to school until the September following their fifth birthday. It is for the admission authority of a school to decide, in the best interest of the child, whether or not the individual child's circumstances present the need for entry to reception a year late. Parents may submit along with their application for an out of year place, any evidence they want taken into consideration.

If the admission authority refuses an out of year request, the parent has a right of appeal, but only if the school has not offered a place in another year group other than the parent's preferred year. If the admission authority approves the request, the parent will be advised to re-apply in the following year. However, there can be no guarantee of a place as the application will still be assessed against the school's published admission criteria.

Request for admission outside of the chronological year group may have to be considered by a panel that will include: headteacher of the school, an early years professional, educational psychologist and admissions officer.


The arrangements for such requests are in accordance with current legislation that is set out in the Admissions Code 2021.

Use of your personal information

The London Borough of Hammersmith & Fulham will handle information you have provided for school admission purposes in line with the GDPR 2018. For more information on this, please visit our *Privacy Notice* on www.lbhf.gov.uk/schooladmissions 

Fraudulent applications

Hammersmith & Fulham Council takes very seriously any attempt to obtain a school place by fraud. All cases are fully investigated and the use of internal and external agencies has improved detection rates. Council officers will carry out unannounced address visits as appropriate.

If you know someone who intends to or has used a false address to get a school place, you can report this confidentially to the admissions team on 020 8753 1085 or email: school.admissions@lbhf.gov.uk 

You do not need to give your name but please provide as much information as possible so we can investigate the matter fully.

If we find a school place was obtained using a false address we will withdraw our offer, even after the child has started school, and give it to the child who was entitled to the place. If it is decided not to remove the offer, normally when the child has been on roll for than one term, any future sibling link will not apply.

*The local authority is the Admission Authority for community and voluntary controlled schools. The governing body is the Admission Authority for all other schools/academies. Any decision is applicable only to the school for which the Admission Authority is responsible.

The application process

Completing your application

Guidance on completing your application (paper or online)

The online application is set out in a similar way to the paper form. The following guidance applies to both:

- Naming only the school you most want for your child will not increase his or her chance of being offered a place at that school.
- If we receive more than one application form for your child, the most recently dated form will be the one that we process.
- Because of the demand for places at the most popular schools, your child may not be offered a place at your first preference.
- Only naming one or two preferences will limit your chances of being offered a place. It is therefore advised you name further preferences and ones you consider to be realistic options.

Your child's name

Please write your child's name clearly and use the same name you have registered with your child's nursery school or children's centre (if this applies).

Your child's date of birth

You should only be applying for a reception place if your child was born between **1 September 2020** and **31 August 2021**. If your child does not fall within this birth range and there are reasons to request your application be considered the following year, please refer to page 16 for further information.

Your child's home address

The address you give must be your child's permanent address on the closing date for applications. Please see page 11 for more information.

Current nursery or early years provision

If your child attends a nursery, please indicate this in the space provided. If your child does not attend any early years provision, please leave the space blank. You should note attendance at a nursery class does not guarantee or give priority for admission to the reception class of that school.

Details of parent or carer

This section needs to be completed by the parent or carer of the child, who will also need to indicate they have parental responsibility. Only one parent needs to complete this section but you can indicate the name of the other parent in the space provided if you wish.

Relationship to child

Please indicate your relationship to the child (such as mother, father, grandmother, foster carer).

Children with an Education, Health and Care (EHC) plan

You do not need to complete this application if your child has an EHC plan as there is a separate process that is outlined on page 114 in this brochure.

If your child is in the process of being assessed for a statement, however, it is useful to make us aware of this. Doing so will ensure the school that is eventually offered to your child is fully aware before admission and can plan accordingly to be able to meet your child's needs.



The application process

Completing your application

Children Looked After

Children Looked After (also referred to as in “Public Care”) and children who have been adopted or made subject to a child arrangement order or a special guardianship order immediately after having been looked after receive priority for admission to school. The child’s social worker must submit a letter to the admissions team confirming the legal status of the child and the local authority to which the child is/was in care, quoting the child’s full name and current address. This category of children include children who appear to the admission authority to have been in state care outside of England and ceased to be in state care as a result of being adopted.

Exceptional need

All schools have experience in dealing with children with diverse needs. However, in a very few exceptional cases, there may be reasons why a child may need to attend a specific school. Please refer to page 14 for further information.

School preferences

You can list up to six state-maintained schools, including any voluntary aided (church) schools, foundation schools, free schools and academies, and any schools in neighbouring local authorities, in order of your preference. Please do not name independent/private fee-paying schools on this form – applications to these must be made separately.

Please write the name and address of the school in the space against each school preference. You do not have to name six schools, but it is strongly advised you should use as many preferences as possible and include at least one school where you have a good chance of being offered a place.

You will need to read the admission criteria for the schools to determine what chances you have of gaining a place. Applying for only one school will not improve your chances of getting a place at that school.

Siblings (brothers or sisters)

If your child has a brother or sister who is currently on roll, and will continue to be so, at one of your preferred schools at the time of admission for the child you are applying for, you must include their details where requested. Relatives such as cousins, uncles and aunts are not considered as siblings, even if they are living at the same address.

Please be aware the definition of sibling can vary, so you are strongly advised to check with relevant boroughs or schools for their definition and if the school gives priority to siblings.

Siblings of former pupils

Some schools give priority to siblings of former pupils in their admission criteria. This does not apply to all schools, so check the criteria for the school you are applying to. If you are applying under this criterion please list the name and date of birth of the former sibling and the school they attended in the relevant box.

Children of school staff

Some schools give priority in their admission criteria to children of staff. This does not apply to all schools, so check the criteria for the school you are applying to. Please indicate in the relevant section if you are applying under this criterion, naming the school you are applying for. You must also provide supporting evidence from the school.

Reasons for preference

Please note schools can only use their published admission criteria to decide which children qualify for a place. It is therefore not necessary to give reasons for your preferences. If, however, there are medical or social reasons why your child should attend the school you have named, please indicate these, as outlined above.

Declaration and signature of parent or carer


You must sign your application to certify you have parental responsibility for the child for whom you are applying and the address on the application is the main residence of the child.

If you provide any false or misleading information on the application or in supporting papers or withhold relevant information, it may render your application invalid and lead to the withdrawal of an offer of a place.

The application process

Completing your application

Apply online and save time

If you are an H&F resident you must complete the Hammersmith & Fulham common application to apply for a primary school place. We recommend you apply online at www.lbhf.gov.uk/eadmissions 

If you wish to submit a paper application, you can obtain a paper form from the admissions team. Paper forms will not be made available at schools.

You will have the opportunity to express a preference for **up to six** primary schools, including schools outside Hammersmith & Fulham. You must list them in order of preference. This means you should write your first preference (i.e. the school you most want your child to go to) at the top of the list, your second preference below, then continue adding any further preferences you would like to make.

If you wish to apply for a primary school place in Hammersmith & Fulham but are not an H&F resident, you must complete your own local council's application form and follow its instructions for submission.

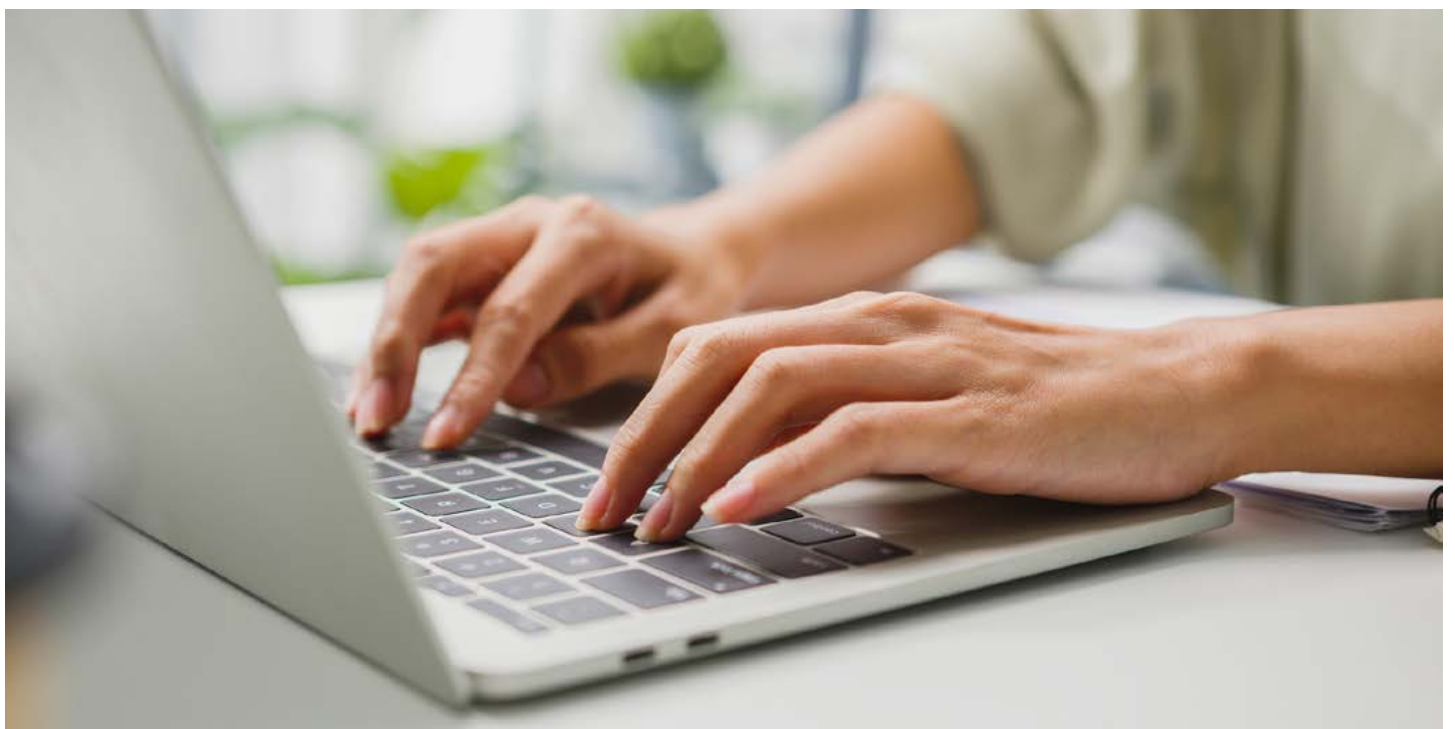
The council will co-ordinate the admission process with the other 32 London boroughs and neighbouring authorities to ensure no child receives more than one offer of a place at a primary school in London on **16 April 2025**.

The one offer received will be for the highest-preference school for which your child is eligible. It is vital you put your school preferences in the correct order.

You can apply online in five easy steps


Why apply online?

- It is quick and easy to do.
- You can log back on to change or delete preferences up until 11.59pm on the closing date (ensure you resubmit your application if making changes).
- You are able to attach additional documents.
- You can register your mobile phone number to receive reminder alerts.
- You will automatically receive a confirmation email once you submit your application.
- During the evening of **16 April 2025** you will receive an email with the outcome of your application. Please wait until you have received the email before logging onto the Pan-London eAdmissions website.
- You will be able to accept or decline an offer of a school place online.



The application process

A step-by-step guide to applying online

To start your online application visit: www.eadmissions.org.uk 

Or use the link from the council's website: www.lbhf.gov.uk/schooladmissions 

1


If you have used the online system before, log into your account* and proceed to step 2. To create a new account:

- Enter your details providing your name, address and contact information by clicking on **'Register'** in the First Time Visitors area.
- You will be asked to create a password. You will need this to get the outcome of your application.
- Read the privacy policies before ticking the agreement box and click **'Create'** to set up your account. You will receive a validation email to activate your account.
- Next, specify answers for three security questions. This will help you to reset the account if you forget your password.

New Account

Please enter your details below.

Title *

Select your title 

First name *

John

Last name *

Smith

Postcode * 

Please enter your current postcode and then click 'Search'. A valid postcode is less than 8 characters.

Postcode

Search

2

- Click **'Start application'**.
- Enter your child's details as accurately as possible.
- Apply only for a child born between 1 September 2020 and 31 August 2021.
- **Make sure you enter your permanent address only.** This will be verified against council records.
- If you have twins or triplets, you must remember to create a separate application for each child.
- **You will need to specify your relationship to the child and confirm whether you have parental responsibility for them.**

Child details

Child's name must be as it appears on their birth certificate

First Name *

First Name

Middle Name

Middle Name

Last Name *

Last Name

Date of Birth * 

01

09

2020

Gender * 

Boy Girl

Address * 

Use your home address

LBHF SCHOOL ADMISSIONS
145 KING STREET
LONDON
W6 9XY

*If you have forgotten your log-in details click on the 'Forgotten username and password' link on the eAdmissions website: www.eadmissions.org.uk

The application process

A step-by-step guide to applying online

3

- Add your school preferences by first selecting the local authority that each school falls within.
- **Make sure that you read the schools' admission criteria.** This will be a guide as to the likelihood of being offered a place at the school you are interested in.
- Select and add the schools you wish to apply for. You can apply for up to six schools.
- For each school selected you will be asked a number of questions (such as whether there is a sibling at the school). Make sure you answer the questions correctly.
- If you tick the medical/social box please ensure you provide additional documents either by attaching them to the application (after submitting) or by sending them to the admissions team.

Add schools
Find schools to add to your application from:

List of schools **i** Map **i** Keywords **i**

Select a Local Authority
Hammersmith and Fulham **v**

Select a school
--- Please select --- **^**

Start typing a school name

- Addison Primary School
- All Saints CE Primary School
- Ark Bentworth Primary Academy
- Ark Conway Primary Academy
- Ark White City Primary Academy
- Avonmore Primary School
- Brackenbury Primary School

4

- Check all of the details entered are correct.
- Be sure to review the checklist.
- Read the declaration and the terms and conditions and tick each box to accept them.
- Click the 'Submit Application' button.
You must click the submit button by the closing date of the 15 January 2025. If you do not do this, your application will not be processed.
- Once you have submitted your application you will be able to attach documents.
- You will receive an email confirmation.

Remember:

If you apply online, you must not complete a paper application form

By submitting this form I agree to the following:

- I have read the admissions guidance issued by the Local Authority for each school I have selected.
- I wish to apply for a place at each of the schools named above and have listed these in my order of preference.
- I will keep the Local Authority informed of **any** change of circumstances (e.g. change of address) and failure to do so may make this application invalid or lead to the offer of a place being withdrawn.
- I understand that the Local Authority may take steps to verify any information relating to this application.
- I understand that any false or deliberately misleading information given on this form and/or supporting information may make this application invalid or lead to the offer of a place being withdrawn.
- I understand that the Local Authority where I live is under a duty to protect the public funds it administers and may therefore share the information I have provided in this application within the Local Authority and with other bodies administering public funds, for the detection and prevention of fraud.

I have read and accepted the above declaration

I have read and accepted the The London Borough of Hammersmith and Fulham terms and conditions

I agree that The London Borough of Hammersmith and Fulham will use the information I have provided to process my application for the schools listed. When processing the application the Council may share the information with other third party organisations such as the previous school, schools being applied for and the maintaining authority for those schools as well as any other relevant statutory partners.

Submit application

The application process

What will happen next

How decisions are made

The process

The admissions team will process any preferences you have made for Hammersmith & Fulham schools and pass on your child's details to schools that are responsible for their own admissions. If you have applied for schools that are not located in Hammersmith & Fulham, your preference/preferences will be passed to the local authority that maintains those schools. At the same time, the admissions team will receive applications for Hammersmith & Fulham schools from residents in other local authorities. All these operations will be carried out via the Pan-London Co-ordinated Admissions System.

The order of your preferences is not revealed to the schools. This information is only known by your home local authority and the authority where the schools are located.

If any school has more applicants than places available, the published admission criteria will be used to decide the order in which applicants will be offered places. The same process is carried out across London and decisions are made by all Admission Authorities by a common deadline and relayed back to the home local authority. This co-ordinated process eliminates multiple offers and will result in your child being offered the highest potential school you named in your list of preferences (if an offer can be made). Examples are shown in the tables below.

You need to be realistic when deciding your school preferences. This is because you may not receive an offer at any of your preferred schools if your child does not meet the criteria. That may happen if, for example, you live too far away from the school based on outcomes for previous years or you name an oversubscribed church school but do not attend church and therefore would not meet a high enough priority against the school's admission criteria.

A breakdown of last year's admissions to each Hammersmith & Fulham school is included in the schools section of this brochure on pages 27 to 112. You will find this information is available for all schools in the respective local authority brochure, which can be accessed online (neighbouring London local authority website addresses and contact details can be found on pages 120 to 121).

Example 1

Preference rank	School	Criteria met?	Outcome
1st	Old Oak Primary School	Yes	Place offered
2nd	Wormholt Park Primary School	Yes	Withdrawn as higher offer met
3rd	Addison Primary School	Yes	Withdrawn as higher offer met
4th	Ark White City Primary Academy	Yes	Withdrawn as higher offer met
5th	Ark Bentworth Primary Academy	No	Withdrawn as higher offer met
6th	Miles Coverdale Primary School	Yes	Withdrawn as higher offer met

Example 2

Preference rank	School	Criteria met?	Outcome
1st	Holy Cross Catholic Primary School	No	Placed on waiting list
2nd	Sir John Lillie Primary School	Yes	Place offered
3rd	St Cuthbert with St Matthias C of E Primary School	No	Withdrawn as higher offer met
4th	St Thomas of Canterbury Catholic Primary School	Yes	Withdrawn as higher offer met
5th	No preference made	N/A	N/A
6th	No preference made	N/A	N/A

The application process

What will happen next

Notifying you of the outcome

If you made your application online, you will be able to log on to the eAdmissions site using your username and password during the evening of **16 April 2025** to view the outcome of your application and accept or decline any offer made. Letters will only be sent in the post to residents who completed the paper application form, unless an email address was provided. Letters will be sent on 17 April via first class post.

The email notification or letter will tell you the following, depending on the outcome of your application:

- The name of the school that can offer you a place. If it is not been possible to offer any of the schools you applied for, the nearest alternative school will be offered to you, if there is one available.
- That any preferences for schools listed lower than the school offered have been withdrawn.
- How to accept the place you have been offered. You should not reject the place unless you have a place secured elsewhere and should indicate the name of the alternative school.
- If you have not been offered one of your school preferences, the reason why and who to contact for further information*.
- Waiting list and appeal information and who to contact for further details.
- The details of schools which have vacancies, if you did not receive an offer for any of your preferences and you do not want to accept the alternative school offered to you.



*The email notification or letter does not go into the detail of why a place could not be offered, and can only inform you your child did not receive a high enough priority in the oversubscription criteria. You will be able to obtain more detailed information from the local authority where the school is located or the school itself if it is its own Admission Authority. Please contact the admissions team in the first instance. They will be able to advise you.

The application process

What will happen next

Waiting lists

Your child's name will automatically be added to the waiting list for any Hammersmith & Fulham schools that could not be offered. Any schools you named as a lower preference than the school offered to your child would have been withdrawn under the co-ordinated arrangements. You will need to re-apply to these schools if you want your child to be included on a waiting list.

If you have not been offered a place for a voluntary aided school, free school, academy or a school in another borough and require waiting list information, you will need to contact the school or the borough that maintains the school.

All places on the waiting list are ordered in accordance with the published admission criteria for each school and will be offered to children as vacancies arise with no differentiation between on-time or late applications. Waiting list positions for community schools will not be available until **15 May 2025**.

The governors will decide who is offered any subsequent vacancies at voluntary aided schools, free schools or academies in line with the published admission criteria and waiting list ranking. You will be notified of any offer that can be made by the admissions team after **15 May 2025**.

A child's position on the waiting list can go down as well as up. For example, if a new application is submitted for a community school and they live closer to the school, the waiting list will need to be revised. The offer of a place does not depend on the length of time your child's name has been on the waiting list and there can never be any guarantee a place will be offered.

Waiting lists for Hammersmith & Fulham community schools are maintained by the admissions team. You will be contacted at some point during the academic year to indicate continued interest. If you do not respond, your child's name will be removed from the list unless you inform us otherwise. This exercise is carried out to ensure waiting lists only ever include children who would take up an offer for a school if it became available.

Appeal arrangements

You have the right of appeal to an independent panel against the decision to refuse your child a place at any school which you named on the Hammersmith & Fulham application form.

With the exception of very limited circumstances, the law does not allow infant classes to exceed 30 (Reception, Year 1 and 2). This means that an appeal panel can only uphold an appeal where it is satisfied:

- The decision to refuse your child was unreasonable in legal terms;
- An error occurred in carrying out the school's admission arrangements that prevented your child being offered a place; or
- The admission arrangements for the school were unlawful and, had they been lawful, your child would have been offered a place.

The outcome notification which you will receive will tell you how to lodge an appeal. Appeals for community schools should be lodged by **27 May 2025** and sent to the admissions team to ensure they are heard before the end of the summer term.

Appeals for voluntary aided schools should be made directly to the governing body, as detailed in your notification letter, as each school will have its own appeal arrangements in place.

If you would like to seek independent advice you may wish to contact the Child Law Advice Service which provides free legal information, advice and representation to children, their families and carers. Please see their website for further details www.childlawadvice.org.uk/school-admissions or call 0300 330 5485 Monday to Friday for advice.

The application process

What will happen next

Making final arrangements for starting school

The law requires your child must receive full-time education from the start of the term following their fifth birthday. A review of the Primary Curriculum in 2009 recommended all parents should have the right to start their child in the September following their fourth birthday if they feel this is best for their child.

All offers will be made for children to start school at the beginning of the autumn term. Parents will also have the option to start their child on a part-time basis or defer their child's entry.

If you decide you prefer to defer your child's entry to the school offered, that place will be held for your child

and will not be offered to another child. You would not, however, be able to defer entry beyond the beginning of the term after your child's fifth birthday.

If you decide you would prefer your child to start school on a part-time basis, the school will inform you of the part-time hours available that your child will be expected to attend. Each school will have different arrangements in place and will be dependent on their staffing, resources and how their infant classes are organised. You will not be able to choose your own part-time hours.



The application process

Frequently asked questions

What does the law require?

Of parents:

Every parent has duty to ensure their child receives efficient, full-time education, suitable to his or her age, ability or aptitude (and to any special need), either by regular attendance at school or otherwise.

Of local authorities:

A local authority has duty to ensure sufficient primary and secondary schools of appropriate character and equipment are available to provide all pupils in the area with education suitable to their ages, abilities and aptitude.

Will a school know where I listed it in my application?

No, they will not have this information. All applications are treated equally against each school's published admission criteria. Schools are not provided with the preference order as it has no relevance to the decision-making process.

The distance you have calculated from my home to the school is further away than the distance I have calculated on a measuring system I used on the internet. What do I do?

The council's geographical measuring system is used for calculating distances from home to school. Distances measured by other means (such as private car, pedometer or on the internet) are likely to be calculated on a different basis and should not be relied upon as evidence the council's distance calculation is incorrect. The council's measurement system is designed to be precise, reliable and consistent, and is used for all applications.

Do I have priority for a school place in the borough I live in?

No, it is against the law for local councils to give priority to their own residents.

Can I change or withdraw my preferences after I have submitted my application?

Once you have submitted your application, you can change the order of your preferences and the schools you have listed up until the closing date. Changes cannot be made to your application after the closing date.

Does the law guarantee my child a place in the school of my choice?

You might not be offered one of your preferences but to increase your chances of being offered a place at one of your preferred schools, you must do your research.

The law states parents may express a preference for any school; however, if more parents express a preference for a school than the number of places available, there has to be an order of priority to decide which children to offer places to. The law allows parents to appeal to an independent panel if their child is refused a place at a school of their preference. Please refer to the section on appeals on page 24 for further information.

The school I have applied for has random allocation to decide who is offered a place. How does this work?

Some schools use random allocation instead of distance in order to determine a rank number order when there are more applications than places available. This may also be referred to as a lottery or ballot. Schools can decide how they apply this method but it must be supervised by someone independent of the school. This can be an individual or an external organisation.

When places become available, random allocation must be used each time to determine the next offer. This will mean that there is no ordered waiting list for schools that use random allocation. Each time random allocation is applied, a record is kept that will show the rank number given to the applicant.

If I decide I prefer a school I listed lower than the school I was offered, can I be considered for a place?

Any preferences that are listed lower than the school offered are automatically withdrawn, so any lower preferences will no longer exist. Any requests after offers have been made for lower preferences will be treated as a new late application. If the school has a vacancy, then it will be possible to offer your child a place and withdraw the original offer made to you. If the school is full your child's name will be added to the waiting list but you will normally be ranked on the school waiting list below all other applicants for the school.

School information



Common definitions

The following common definitions will apply to the majority of schools in this section. You are, however, advised to read the full admission arrangements, which can be obtained directly from the respective school, its website and the council website.

Please note:

For all schools included in this brochure, children with an Education, Health and Care (EHC) plan that name the school will be allocated a place before any other allocations are made. Further information can be found on page 114.

Children Looked After/Previously Looked After (also referred to as in "Public Care")

Children Looked After (also referred to as in "Public Care") and children who have been adopted or made subject to a child arrangement order or a special guardianship order immediately after having been looked after receive priority for admission to school. The child's social worker must submit a letter to the admissions team confirming the legal status of the child and the local authority to which the child is/was in care, quoting the child's full name and current address. This category of children include children who appear to the admission authority to have been in state care outside of England and ceased to be in state care as a result of being adopted.

Siblings (brothers and sisters)

Children already attending the school who will continue to do so on the date of admission of the applicant. This includes half-brothers or half-sisters, adopted brothers or sisters, stepbrothers or stepsisters or the children of the partner of the parent or carer, provided they live at the same address as the applicant.

Distance from home to school

Unless indicated otherwise in the individual admission criteria for each school, distances are calculated using a straight line (as the crow flies) measurement from the child's home 'address point' determined by Ordnance Survey Data to the main entrance gate for pupils, as determined by H&F Council using its computerised measuring system. The child living closest to the school will receive the highest priority. Accessibility by car or public transport will be disregarded.

If applicants share the same address point (for example, those who live in the same block of flats or shared house) priority will be given to those who live closest to the ground floor and then by ascending flat number order. Routes will be measured to four decimal places (if necessary).



Common definitions

If, in the unlikely event two or more applicants live exactly the same distance from the school, the offer of a place will be decided by random allocation, which will be carried out independently of the school.

Exceptional need

If this priority forms part of the school's admission criteria, the admissions authority* may, on an individual basis, give priority to applicants who can demonstrate admission to the school is necessary on the grounds of professionally supported educational, medical and/or social need and no other school can meet this need. Parents/carers must supply details of any such special factors at the time of the original application, together with recent supporting documentation. Such applications will not be considered without professional support – such as a letter or report from a doctor, consultant or social worker. Further guidance can be found on page 14.

Children from multiple births (e.g. twins, triplets)

Each school must set out in its admission arrangements how it considers applicants from multiple births when the admission limit may be exceeded to admit all children. In most cases, places will be offered to all children as this is an exception to infant class size regulations. You are, however, advised to check the full policy for the school/schools you are applying for if this is a concern for you as different rules may apply.

Children of staff**

Children whose parent is a qualified teacher, employed for a minimum of 0.6fte (16.5 hours teaching staff) who has been employed at the school concerned for two or more years at the time of application and/or children of any member of staff who has been recruited to fill a (full-time) vacancy for which there is a demonstrable skills shortage.

Priority will be limited to one place for each form of entry in any year with an additional maximum limit of no more than:

- Three children throughout the whole school (for single form entry schools)

- Four children throughout the whole school (for 1½ form entry schools)
- Five children throughout the whole school (for 2 form entry schools, and upwards).

Exception to the above will apply to children of multiple birth or those born in the same academic year.

All such applications must be submitted to the local authority and must be accompanied with the relevant paperwork supporting an application on these grounds. The applicant must take sole responsibility to provide such paperwork. Without the provision of the relevant papers, priority will not be given on these grounds.



*The local authority is the Admission Authority for community and voluntary controlled schools. The governing body is the Admission Authority for all other schools/academies. Any decision is applicable only to the school for which the Admission Authority is responsible.

**The above applies to community schools only. Voluntary aided schools and academies that have this as a criterion will have their own definition.

School information

Community schools

The community schools in Hammersmith & Fulham are:

Addison Primary School

Avonmore Primary School

Brackenbury Primary School

Flora Gardens Primary School

Kenmont Primary School

Melcombe Primary School

Miles Coverdale Primary School

Normand Croft Community School

Old Oak Primary School

Sir John Lillie Primary School

Wendell Park Primary School

Wormholt Park Primary School

Admission criteria for community schools

In each of the school's entries that follow there is a section outlining the way in which places were offered for September 2024. The admission number stated is the number of children the school can admit into the reception year. You can compare this figure with the number of people who expressed a preference for the school on their application form last year, shown as **Applications last year**. When on-time applications exceed the number of places available (also referred to as oversubscribed), the school's admissions criteria are used to determine the priority order of offers to be made.

Where a school is oversubscribed, home-to-school distance is the major factor in allocating places for community schools. To help you to make an informed decision when deciding which schools to apply for, the distance of the last applicant offered has been included for oversubscribed schools (all distances are shown in miles). Each entry will also show the number of siblings offered and, if relevant, places allocated to children with an EHC plan and Children Looked After.

It is important to be aware the above information is provided to help you to make an informed decision when deciding which schools to apply for. How places are offered will vary from year to year and will be dictated by the overall number of applications submitted for each school and the number of siblings. There is therefore no guarantee your child will be offered a place if your home-to-school distance falls within the distance reached for applicants offered in 2024.

Please refer to the full admissions arrangements available on the Hammersmith & Fulham website:

www.lbhf.gov.uk/schooladmissions 

Applicants with an EHC plan that names a school will be admitted in accordance with Section 43 of the Children and Families Act 2014.

If there are more applications to the school than there are places available, places will be allocated in the following order of priority.

1. Children in Public Care* (also known as Children Looked After) in the care of the local authority and children who have been adopted or made subject to a child arrangement or special guardianship order immediately following having been looked after. The child's social worker must submit a letter to the admissions team confirming the legal status of the child and the local authority to which the child is/was in care, and quoting the child's full name and current address.
2. The director of Education and SEND, as advised by senior officers, may on an individual basis give priority to applicants who can demonstrate admission to a particular community school is necessary on the grounds of professionally supported educational, medical and/or social need and only this school can meet this need. Parents/carers must supply details of any such special factors at the time of the original application together with recent supporting documentation. Such applications will not be considered without professional support, such as a letter or report from a doctor, consultant or social worker, which must be no more than six months old.

*Children in Public Care has the same meaning as in section 22 of the Children Act 1989, and means any child in the care of the local authority or provided with accommodation by it (such as children with foster carers).

Community schools

All information submitted will be regarded as confidential.

3. To brothers and sisters (siblings) of children already on the roll of the school who will still be in the school at the time the applicant is admitted. This includes half-brothers or half-sisters, adopted brothers or sisters, stepbrothers or stepsisters or the children of the partner of the parent or carer, provided they live at the same address as the applicant. Please note sibling priority only applies to children with a sibling or siblings at the school from reception to Year 6 at the time of admission, not nursery.
4. Children whose parent is a qualified teacher, employed for a minimum of 0.6fte (16.5 hours teaching staff) who has been employed at the school concerned for two or more years at the time of application and/or children of any member of staff who has been recruited to fill a (full-time) vacancy for which there is a demonstrable skills shortage.

If in any of the categories 1, 2, 3 or 4 there are more applicants than there are places available, priority will be given to applicants who live nearest the school on the basis described in 5.

5. Children living nearest to the school calculated as a straight line. Nearness to the school will be calculated using a straight line (as the crow flies) measurement from the child's home 'address point' determined by Ordnance Survey Data to the nearest entrance for pupils, as determined by Hammersmith & Fulham Council using its computerised measuring system. The child living closest to the school will receive the highest priority. Accessibility by car or public transport will be disregarded.

If applicants share the same address point (for example, those who live in the same block of flats or shared house) priority will be given to those who live closest to the ground floor and then by ascending flat number order. Routes will be measured to four decimal places (if necessary). If two or more applicants live at exactly the same distance from the school, the offer of a place will be decided by random allocation.



School information

Details of community schools

Addison Primary School

Addison Gardens
London W14 0DT

☎ **020 7603 5333**
✉ **admin@addison.lbhf.sch.uk**
🌐 **www.addisonprimary.org**

Type of school

Community

DfE number

205 2002

Headteacher

Damien McGarrigle

Admission number

30

Supplementary form

No

Visiting days

Please contact the school

Nursery

Yes

Breakfast club

Yes

After-school club

Yes

School uniform

Yes

Nearest Tube stations

Hammersmith (Circle, District, Hammersmith & City and Piccadilly Lines); Kensington Olympia (District Line and Overground); Shepherd's Bush (Central Line and Overground)

Bus routes

72, 220, 283, 295



School information

Details of community schools

Addison Primary School

Summarised admissions criteria

If there are more applications than places available, Hammersmith & Fulham Council, as the admission authority, will allocate places in the following order of priority:

1. Children Looked After*.
2. Exceptional need*.
3. Siblings*.
4. Children of staff*.
5. Distance from home to school*.

Key: An asterisk (*) used above denotes that further information on the admission policy and criteria for Hammersmith & Fulham community schools can be found on page 30.

Applications last year

Total number of on-time applications submitted
88

How places were offered in 2024

All on-time applications were offered.

Appeals

No appeals were lodged.

About our school

Addison Primary is a school where pupils excel, regardless of their starting points. We are a high achieving school across all key stages. Out of 16,783 primary schools, Addison performed in the top 5 per cent for KS2 SATs; top 1 per cent for phonics; top 200 schools for the Year 4 Multiplication Test, and is above national in Reception.

Pupils love to come to school because of all the varied trips and experiences they are immersed in. We aim for all pupils to be given opportunities above and beyond the classroom to enable them to become resilient, compassionate and resourceful individuals.

From the moment pupils join, they are introduced to our five core values (Honesty, Perseverance, Responsibility, Respect and Friendship). Our values are principles that guide behaviour, and promote a safe and happy environment.

School information

Details of community schools

Avonmore Primary School

Avonmore Road
London W14 8SH

☎ **020 7603 9750**
✉ **office@avonmoreprimary.co.uk**
🌐 **www.avonmoreprimary.co.uk**

Type of school

Community

DfE number

205 2026

Executive Headteacher

Paul Cotter

Headteacher

Maya Wittleton

Admission number

30

Supplementary form

No

Visiting days

Please contact the school

Nursery

Yes

Breakfast club

Yes

After-school club

Yes

School uniform

Yes

Nearest Tube stations

Barons Court (District and Piccadilly Lines); Kensington Olympia (District Line and Overground); West Kensington (District Line)

Bus routes

9, 23, 27, 28, 391



School information

Details of community schools

Avonmore Primary School

Summarised admissions criteria

If there are more applications than places available, Hammersmith & Fulham Council, as the admission authority, will allocate places in the following order of priority:

1. Children Looked After*.
2. Exceptional need*.
3. Siblings*.
4. Children of staff*.
5. Distance from home to school*.

Key: An asterisk (*) used above denotes that further information on the admission policy and criteria for Hammersmith & Fulham community schools can be found on page 30.

Applications last year

Total number of on-time applications submitted
99

How places were offered in 2024

Siblings: 8

Children of staff: 1

Distance: 21 (last distance offered up to 0.468 of a mile)

Appeals

Please refer to the school.

School information

Details of community schools

Brackenbury Primary School

Dalling Road
London W6 0BA

☎ 020 8743 3074
✉ admin@brackenbury.lbhf.sch.uk
🌐 www.brackenbury.lbhf.sch.uk

Type of school

Community

DfE number

205 2061

Executive Headteacher

Mr David Collins

Head of School

Ms Georgina Ross

Admission number

60

Supplementary form

No

Visiting days

Please contact the school

Nursery

Yes

Breakfast club

Yes

After-school club

Yes

School uniform

Yes

Nearest Tube stations

Goldhawk Road (Circle and Hammersmith & City Lines); Ravenscourt Park (District Line)

Bus routes

94, 237, 266



School information

Details of community schools

Brackenbury Primary School

Summarised admissions criteria

If there are more applications than places available, Hammersmith & Fulham Council, as the admission authority, will allocate places in the following order of priority:

1. Children Looked After*.
2. Exceptional need*.
3. Siblings*.
4. Children of staff*.
5. Distance from home to school*.

Key: An asterisk (*) used above denotes that further information on the admission policy and criteria for Hammersmith & Fulham community schools can be found on page 30.

Applications last year

Total number of on-time applications submitted
138

How places were offered in 2024

All on-time applications were offered.

Appeals

No appeals were lodged.

About our school

Brackenbury is a vibrant and welcoming community school. We strive to nurture our students to have the confidence and skill to be happy and successful. We have a creative and engaging curriculum where students are encouraged to become resilient learners. We aim to enable students to develop their own unique talents while promoting respect for each other

Brackenbury works closely with Kenmont Primary School and Wendell Park Primary School within a federation sharing an Executive Head teacher. The federation enables our staff to work collaboratively and share expertise with other teachers for the benefit of the Brackenbury children. We look forward to welcoming you to Brackenbury Primary School.

School information

Details of community schools

Flora Gardens Primary School

Temporary site at
34 Lena Gardens, W6 7PZ
(Please see note on page 39)

☎ **020 8748 2566**
✉ **office@fgschool.co.uk**
🌐 **www.floragardens.lbhf.sch.uk**

Type of school

Community

DfE number

205 2223

Headteacher

Mr AS Naismith

Admission number

30

Supplementary form

No

Visiting days

Please contact the school

Nursery

Yes

Breakfast club

Yes

After-school club

Yes

School uniform

Yes

Nearest Tube station

Ravenscourt Park (District Line)

Bus routes

27, 190, 266, 391, H91



School information

Details of community schools

Flora Gardens Primary School

Summarised admissions criteria

If there are more applications than places available, Hammersmith & Fulham Council, as the admission authority, will allocate places in the following order of priority:

1. Children Looked After*.
2. Exceptional need*.
3. Siblings*.
4. Children of staff*.
5. Distance from home to school*.

Key: An asterisk (*) used above denotes that further information on the admission policy and criteria for Hammersmith & Fulham community schools can be found on page 30.

Applications last year

Total number of on-time applications submitted
82

How places were offered in 2024
All on-time applicants were offered.

Appeals

No appeals were lodged.

About our school

At Flora Gardens, our pupils come first and we aim to inspire them to fulfil their potential in each stage of their life. Our school is about far more than academic results: it is about happiness, community, respect, honesty and family. We deliver learning experiences for every individual that are innovative, creative, purposeful and fun, set in our unique, spacious green grounds that give children outstanding opportunities to explore, flourish and succeed.

We have 27 different after-school clubs on offer to our pupils. We also understand the needs of working parents and provide a breakfast club from 7.30am and an after-school service until 6pm.

Note: Temporary relocation

Flora Gardens will temporarily be decamping to the site of defunct Lena Gardens Primary School on Lena Gardens, W6 7PZ. Check the school's website for updates.

School information

Details of community schools

Kenmont Primary School

Valliere Road
London NW10 6AL

☎ **020 8969 4497**
✉ **admin@kenmont.lbhf.sch.uk**
🌐 **www.kenmont.lbhf.sch.uk**

Type of school

Community

DfE number

205 2350

Executive Headteacher

Dave Collins

Headteacher

Andrew Connell

Admission number

30

Supplementary form

No

Visiting days

Please contact the school

Nursery

Yes

Breakfast club

Yes

After-school club

Yes

School uniform

Yes

Nearest Tube station

Willesden Junction (Bakerloo Line and Overground)

Bus routes

18, 187, 220



School information

Details of community schools

Kenmont Primary School

Summarised admissions criteria

If there are more applications than places available, Hammersmith & Fulham Council, as the admission authority, will allocate places in the following order of priority:

1. Children Looked After*.
2. Exceptional need*.
3. Siblings*.
4. Children of staff*.
5. Distance from home to school*.

Key: An asterisk (*) used above denotes that further information on the admission policy and criteria for Hammersmith & Fulham community schools can be found on page 30.

Applications last year

Total number of on-time applicants submitted

86

How places were offered in 2024

Children Looked After: 1

Siblings: 11

Distance: 18 (last distance offered up to 0.312 of a mile)

Appeals

No appeals were lodged.

About our school

We are a small friendly school which has been judged to be good by Ofsted (January 2023). Our school is popular with local families, who value the benefits that a small school offers including a close community, committed staff and an ethos that values each child. We offer a happy and friendly atmosphere and are dedicated to providing an inspiring and engaging curriculum so that children grow to their full potential and become responsible, caring members of the community.

Kenmont works closely with Brackenbury Primary School and Wendell Park Primary School within a federation sharing an Executive Head teacher. The federation enables our staff to work collaboratively and share expertise with other teachers for the benefit of the Kenmont children. We look forward to welcoming you to Kenmont Primary School.

School information

Details of community schools

Melcombe Primary School

Fulham Palace Road
London W6 9ER

☎ 020 8748 7411
✉ admin@melcombe.lbhf.sch.uk
🌐 www.melcombe.lbhf.sch.uk

Type of school

Community

DfE number

205 2408

Executive Headteacher

Anne-Marie Strachan

Admission number 30

Supplementary form

No

Visiting days

Please contact the school

Nursery

No

Breakfast club

Yes

After-school club

Yes

School uniform

Yes

Nearest Tube stations

Barons Court (District and Piccadilly Lines); Hammersmith (Circle, Hammersmith & City, District and Piccadilly Lines)

Bus routes

74, 190, 211, 220, 295, 430



School information

Details of community schools

Melcombe Primary School

Summarised admissions criteria

If there are more applications than places available, Hammersmith & Fulham Council, as the admission authority, will allocate places in the following order of priority:

1. Children Looked After*.
2. Exceptional need*.
3. Siblings*.
4. Children of staff*.
5. Distance from home to school*.

Key: An asterisk (*) used above denotes that further information on the admission policy and criteria for Hammersmith & Fulham community schools can be found on page 30.

Applications last year

Total number of on-time applications submitted

52

How places were offered in 2024

All on-time applicants were offered.

Appeals

No appeals were lodged.

About our school

Melcombe Primary School is situated directly across from Charing Cross Hospital in the local area of Hammersmith & Fulham. The school takes pride in its engaging curriculum, which is enhanced by high-quality educational trips and workshops. Melcombe is proud of its parental partnerships and celebrates its multicultural profile of over forty different countries represented in the school community.

In September 2019, the Thames Federation of Schools was formed and consists of Melcombe Primary School, Bayonne Nursery and James Lee Nursery.

School information

Details of community schools

Miles Coverdale Primary School

Coverdale Road
London W12 8JJ

☎ 020 8743 5847
✉ admin@milescoverdale.lbhf.sch.uk
🌐 www.milescoverdaleprimary.co.uk

Type of school

Community

DfE number

205 2134

Headteacher

Taranum Baig

Admission number

30

Supplementary form

No

Visiting days

Please contact the school

Nursery

Yes

Breakfast club

Yes

After-school club

Yes

School uniform

Yes

Nearest Tube stations

Shepherd's Bush Market (Circle and Hammersmith & City Lines);
Goldhawk Road (Circle and Hammersmith & City Lines)

Bus routes

94, 207, 237, 260, 283



School information

Details of community schools

Miles Coverdale Primary School

Summarised admissions criteria

If there are more applications than places available, Hammersmith & Fulham Council, as the admission authority, will allocate places in the following order of priority:

1. Children Looked After*.
2. Exceptional need*.
3. Siblings*.
4. Children of staff*.
5. Distance from home to school*.

Key: An asterisk (*) used above denotes that further information on the admission policy and criteria for Hammersmith & Fulham community schools can be found on page 30.

Applications last year

Total number of on-time applications submitted
95

How places were offered in 2024
All on-time applicants were offered.

Appeals
No appeals lodged.

School information

Details of community schools

Normand Croft Community School

Bramber Road
London W14 9PA

☎ 020 7385 6847
✉ info@normandcroft.lbhf.sch.uk
🌐 normandcroft.lbhf.sch.uk

Type of school

Community

DfE number

205 3650

Co-headteachers

Katrine Bulley and Emma Bird

Admission number

30

Supplementary form

No

Visiting days

Please contact the school

Nursery

Yes

Breakfast club

Yes

After-school club

Yes

School uniform

Yes

Nearest Tube stations

Fulham Broadway (District Line);
West Kensington (District Line);
West Brompton (District Line
and Overground)

Bus routes

28, 74, 190, 391, 430



School information

Details of community schools

Normand Croft Community School

Summarised admissions criteria

If there are more applications than places available, Hammersmith & Fulham Council, as the admission authority, will allocate places in the following order of priority:

1. Children Looked After*.
2. Exceptional need*.
3. Siblings*.
4. Children of staff*.
5. Distance from home to school*.

Key: An asterisk (*) used above denotes that further information on the admission policy and criteria for Hammersmith & Fulham community schools can be found on page 30.

Applications last year

Total number of on-time applications submitted

43

How places were offered in 2024

All on-time applicants were offered.

Appeals

No appeals lodged.

About our school

Our nursery and reception team will work closely with you to deliver tailored, stimulating activities and exciting learning opportunities based around your children's interests and ideas. We are very fortunate in being able to offer high quality indoor and outdoor learning spaces for under fives to explore.

School information

Details of community schools

Old Oak Primary School

Mellitus Street
London W12 0AS

☎ 020 8743 7629
✉ admin@oldoak.lbhf.sch.uk
🌐 www.oldoakprimary.co.uk

Type of school

Community

DfE number

205 2444

Co-headteachers

Katie Beardsworth and Joe Brown

Admission number

30

Supplementary form

No

Visiting days

Please contact the school

Nursery

Yes

Breakfast club

Yes

After-school club

Yes

School uniform

Yes

Nearest Tube station

East Acton (Central Line)

Bus routes

7, 70, 72, 272, 283



School information

Details of community schools

Old Oak Primary School

Summarised admissions criteria

If there are more applications than places available, Hammersmith & Fulham Council, as the admission authority, will allocate places in the following order of priority:

1. Children Looked After*.
2. Exceptional need*.
3. Siblings*.
4. Children of staff*.
5. Distance from home to school*.

Key: An asterisk (*) used above denotes that further information on the admission policy and criteria for Hammersmith & Fulham community schools can be found on page 30.

Applications last year

Total number of on-time applications

65

How places were offered in 2024

All on-time applications offered.

Appeals

No appeals were lodged.

About our school

Old Oak retains the traditional ethos of a family community school and combines this with the most effective research on successful teaching and learning. We strive for excellence in all areas of school life and have high expectations of every child both in their academic and in their personal development. Our motto is 'every child, every chance every day' – we strive to give every child what they deserve and what they need academically and personally so they are ready for the next stage of their education.

Our recent Ofsted awarded us outstanding in behaviour and attitudes and personal development, which we are immensely proud of. Ofsted stated: "Leaders place a huge emphasis on developing pupils' character and social consciousness. From the start in early years, staff set high expectations for behaviour and attitudes".

We are very proud of our school and would highly encourage you to visit and see us for yourself.

School information

Details of community schools

Sir John Lillie Primary School

Lillie Road
London SW6 7LN

☎ 020 7385 2107
✉ admin@sirjohnlillie.lbhf.sch.uk
🌐 www.sirjohnlillieprimary.co.uk

Type of school

Community

DfE number

205 2555

Headteacher

Sue Hayward

Admission number

30

Supplementary form

No

Visiting days

Please contact the school

Nursery

Yes

Breakfast club

Yes

After-school club

Yes

School uniform

Yes

Nearest Tube stations

Barons Court (District and Piccadilly Lines); West Kensington (District Line); West Brompton (District Line and Overground)

Bus routes

74, 190, 430



School information

Details of community schools

Sir John Lillie Primary School

Summarised admissions criteria

If there are more applications than places available, Hammersmith & Fulham Council, as the admission authority, will allocate places in the following order of priority:

1. Children Looked After*.
2. Exceptional need*.
3. Siblings*.
4. Children of staff*.
5. Distance from home to school*.

Key: An asterisk (*) used above denotes that further information on the admission policy and criteria for Hammersmith & Fulham community schools can be found on page 30.

Applications last year

Total number of on-time applications submitted

52

How places were offered in 2024

All on-time applicants were offered.

Appeals

No appeals were lodged.

About our school

Sir John Lillie Primary is a vibrant, inclusive community school in the heart of Fulham. We are warm and welcoming, create a safe and secure environment and build resilience and respect through high standards. We offer high quality wrap-around care from 7.30am to 6.30pm for 52 weeks of the year (closed for Bank Holidays and staff training days).

We believe all children should be equipped with the skills to succeed on the journey of life-long learning. We aim to enable this through a range of experiences, challenges and opportunities in all areas of the curriculum every day.

School information

Details of community schools

Wendell Park Primary School

**Cobbold Road
London W12 9LB**

☎ 020 8743 1372
✉ admin@wendellpark.lbhf.sch.uk
🌐 www.wendellpark.lbhf.sch.uk

Type of school

Community

DfE number

205 2632

Executive Headteacher

David Collins

Headteacher

Mrs Rosie Peters

Admission number

60

Supplementary form

No

Visiting days

Please contact the school

Nursery

Yes

Breakfast club

Yes

After-school club

Yes

School uniform

Yes

Nearest Tube stations

Stamford Brook (District Line);
Ravenscourt Park (District Line)

Bus routes

207, 266, 272



School information

Details of community schools

Wendell Park Primary School

Summarised admissions criteria

If there are more applications than places available, Hammersmith & Fulham Council, as the admission authority, will allocate places in the following order of priority:

1. Children Looked After*.
2. Exceptional need*.
3. Siblings*.
4. Children of staff*.
5. Distance from home to school*.

Key: An asterisk (*) used above denotes that further information on the admission policy and criteria for Hammersmith & Fulham community schools can be found on page 30.

Applications last year

Total number of on-time applications submitted

116

How places were offered in 2024

All on-time applicants were offered.

Appeals

No appeals were lodged.

About our school

We recognise parents, carers and the wider family as children's first educators. The values that we share are the foundation stones upon which Wendell Park is built. As a school, we work hard to provide a curriculum that inspires children's curiosity; develops their skills and fosters an understanding of others and the world about them. Central to each child's learning is the growth of each child to be independent, confident and thoughtful. We want to inspire our children to be the best person they can be; to celebrate their achievements and contribute positively to the school community.

Wendell Park works closely with Brackenbury Primary School and Kenmont Primary School within a federation sharing an Executive Head teacher. The federation enables our staff to work collaboratively and share expertise with other teachers for the benefit of the Wendell Park children.

School information

Details of community schools

Wormholt Park Primary School

Bryony Road
London W12 0SR

☎ **020 8743 5073**
✉ **info@wormholtpark.lbhf.sch.uk**
🌐 **www.wormholtparkprimary.co.uk**

Type of school

Community

DfE number

205 2660

Headteacher

Anika Hargie

Admission number

60

Supplementary form

No

Visiting days

Please contact the school

Nursery

Yes

Breakfast club

Yes

After-school club

Yes

School uniform

Yes

Nearest Tube stations

East Acton (Central Line); White City (Central Line); Wood Lane (Hammersmith & City and Circle Lines); Shepherd's Bush Market (Hammersmith & City and Circle Lines)

Bus routes

95, 228, 272, 283



School information

Details of community schools

Wormholt Park Primary School

Summarised admissions criteria

If there are more applications than places available, Hammersmith & Fulham Council, as the admission authority, will allocate places in the following order of priority:

1. Children Looked After*.
2. Exceptional need*.
3. Siblings*.
4. Children of staff*.
5. Distance from home to school*.

Key: An asterisk (*) used above denotes that further information on the admission policy and criteria for Hammersmith & Fulham community schools can be found on page 30.

Applications last year

Total number of on-time applications submitted

97

How places were offered in 2024

All on-time applicants were offered.

Appeals

No appeals were lodged.

About our school

At Wormholt Park we are proud of our school and the care we take to create a stimulating, challenging, happy and safe environment for our pupils. We are a Unicef 'Rights Respecting' school, and we ensure that children learn they have responsibilities as well as rights – responsibilities to themselves, to others and to the environment. As a result, our school 'feels' like a special place – a comment often made by our many visitors.

Come and see for yourself – visits by prospective families are welcomed. We invite you to be part of our community!

School information

Academies, free schools and voluntary aided schools

Admission criteria for academies, free schools and voluntary aided schools

All church primary schools provide a supplementary information form (SIF) and/or Priest Reference Form you are advised to complete.

The forms for Hammersmith & Fulham schools can be obtained direct from the school, on the school's own website or at www.lbhf.gov.uk/schooladmissions 

In all cases, you must include the church school/schools you want to apply for in your list of preferences on the main application. If you only complete a SIF, your application will not be considered.

The SIF and all additional documents required must be returned to the school. The same will apply for church schools in neighbouring local authorities.

If you name the school in your application and do not complete a SIF, your child will be considered but it will reduce the chances of your child being offered a place if the school is oversubscribed. The school will not have any information to consider when judging your application against its admission criteria and, as such, your application will be ranked very low when decisions are made. It is therefore important for both forms to be completed.

The way in which places were offered for September 2023 is indicated at the end of the entry for each school. Please note places were offered in accordance with the policy for 2024/25, so there may be changes in the 2025/26 policies published in this brochure. If you are not sure and need further advice on the chances of your child being eligible for a place at one of these schools, please contact the school directly.



School information

Details of academies, free schools and voluntary aided schools

All Saints C of E Primary School

Bishops Avenue
London SW6 6ED

☎ 020 7736 2803
✉ admin@allsaintsce.lbhf.sch.uk
🌐 www.allsaintsce.lbhf.sch.uk

Type of school
Voluntary aided

DfE number
205 3300

Headteacher
Mr Kieran Gorman

Admission number
30

Supplementary form
Yes

Visiting days
Please contact the school

Nursery
Yes

Breakfast club
Yes

After-school club
Yes

School uniform
Yes

Nearest Tube stations
Parsons Green (District Line);
Putney Bridge (District Line)

Bus routes
74, 220, 430



School information

Details of academies, free schools and voluntary aided schools

All Saints C of E Primary School

Admissions criteria

The below criteria has been summarised and you will need to refer to the **school's website** [↗](#) for the full admission policy and arrangements.

Key: An asterisk (*) used below denotes that common definitions can be found on page 28.

Where there are more applications than there are places available, the governors will give priority to Children Looked After*.

Up to 50 per cent of the outstanding places once Children Looked After have been accounted for will be offered as church ones, after which all applications will be treated as open places, taking no account of Christian commitment.

Church places

Up to 50 per cent of all available places once Children Looked After have been taken into account.

Open places

Christian commitment is not required.

Category 1 church siblings*

Children of committed and practising families who will have a sibling in the school at the time of attendance, priority will be given in the following order:

- i) committed and practising members of the churches of All Saints (Fulham) and St Etheldreda & St Clements (Fulham).
- ii) committed and practising members in any other Christian Church in Fulham.

Category 2 open siblings

Children who will have a sibling in the school at the time of attendance.

Category 3 church places

Children of committed and practising families, priority will be given in the following order:

- i) committed and practising members of the churches of All Saints (Fulham) and St Etheldreda & St Clements (Fulham).
- ii) committed and practising members in any other Christian Church in Fulham.

Category 4 open places

All other applicants.

Applications last year

Total number of on-time applications submitted
123

How places were offered in 2024

Children Looked After: 1

Category 1 church siblings: 1

Category 2 open siblings: 4

Category 3 church places: 6 (all foundation applicants were offered)

Category 4 open places: All open applications were offered

Appeals

Please refer to the school.

School information

Details of academies, free schools and voluntary aided schools

Ark Bentworth Primary Academy

Bentworth Road
London W12 7AJ

☎ **020 8743 2527**
✉ **info@arkbentworthprimary.org**
🌐 **www.arkbentworth.org**

Type of school

Academy

DfE number

205 2045

Headteacher

Max Etherton

Admission number

30

Supplementary form

No

Visiting days

Please contact the school

Nursery

Yes

Breakfast club

Yes

After-school club

Yes

School uniform

Yes

Nearest Tube stations

East Acton (Central Line);
White City (Central, Circle
and Hammersmith & City
Lines); Wood Lane (Circle and
Hammersmith & City Lines)

Bus routes

7, 70, 72, 95, 272, 283, 220



School information

Details of academies, free schools and voluntary aided schools

Ark Bentworth Primary Academy

Admissions criteria

The below criteria has been summarised and you will need to refer to the **school's website** [↗](#) for the full admission policy and arrangements.

Key: An asterisk (*) used below denotes that common definitions can be found on page 28.

Where there are more applications than the number of places available, the governing body will issue places according to the following order of priority:

1. Children Looked After*.
2. Children of staff where there is a demonstrable skills shortage. Priority will be limited to one place for each form of entry in any year.
3. Sibling*.
4. Children of staff who have been employed for two or more years. Priority will be limited to one place for each form of entry in any year.
5. Distance from home to school*.

Tie-break

If Ark Schools is unable to distinguish between applicants using the published criteria, including those who live in blocks of flats with the same building entrance, places will be offered via a random draw, which will be supervised by someone independent of the academy.

Applications last year

Total of on-time applications submitted

49

How places were offered in 2024

All on-time applicants were offered.

Appeals

No appeals lodged

About our school

Ark Bentworth is a one form entry school and is both non-denominational and non-selective. Pupils can join us from the age of three or four in our nursery class and stay with us through to secondary school.

Our vision is to 'aim high and achieve together'. We aim to ensure that every child is given equal opportunities to learn and achieve at the highest level. Through high quality teaching and learning our children will develop knowledge and skills, giving them confidence, independence, determination and ambition.

As a community, we can help and support one another to plan and strive for constant improvement. We value strong relationships between children, parents and school and will work tirelessly to ensure that we aim high and achieve together.

School information

Details of academies, free schools and voluntary aided schools

Ark Conway Primary Academy

60 Hemlock Road
London W12 0QT

☎ 020 3249 1180
✉ info@arkconwayprimary.org
🌐 www.arkconway.org

Type of school

Free school

DfE number

205 2000

Regional Director

Kate Magliocco

Head of School

Mrs Rebecca Ross-Wood

Admission number

30

Supplementary form

No

Visiting days

Please contact the school

Nursery

No

Breakfast club

Yes

After-school club

Yes

School uniform

Yes

Nearest Tube stations

East Acton (Central Line);
Shepherd's Bush (Central Line
and Overground)

Bus routes

7, 70, 72, 95, 272, 283



School information

Details of academies, free schools and voluntary aided schools

Ark Conway Primary Academy

Admissions criteria

The below criteria has been summarised and you will need to refer to the **school's website** [↗](#) for the full admission policy and arrangements.

Key: An asterisk (*) used below denotes that common definitions can be found on page 28.

Where there are more applications than the number of places available, the governing body will issue places according to the following order of priority:

1. Children Looked After*.
2. Children of staff where there is a demonstrable skills shortage. Priority will be limited to one place for each form of entry in any year.
3. Sibling*.
4. Children of staff who have been employed for two or more years. Priority will be limited to one place for each form of entry in any year.
5. Distance from home to school*.

Tie-break

If Ark Schools is unable to distinguish between applicants using the published criteria, including those who live in blocks of flats with the same building entrance, places will be offered via a random draw, which will be supervised by someone independent of the academy.

Applications last year

Total number of on-time applications submitted
99

How places were offered in 2024

2 places reserved for pupils with an EHC plan

Siblings: 9

Distance: 19 (up to a distance of 0.412 of a mile)

Appeals

Please refer to the school.

School information

Details of academies, free schools and voluntary aided schools

Ark White City Primary Academy

2 Edcity Concourse
Edcity
London W12 7PT

☎ 020 8116 9300
✉ info@whitecityprimary.org
🌐 www.arkwhitecity.org

Type of school

Academy

DfE number

205 2003

Principal

David Williams

Admission number

60

Supplementary form

No

Visiting days

Wednesday 6 November at 9.15am,
Wednesday 4 December at 9.15am
and 5pm, Wednesday 8 January
at 9.15am

Nursery

Yes

Breakfast club

Yes

After-school club

Yes

School uniform

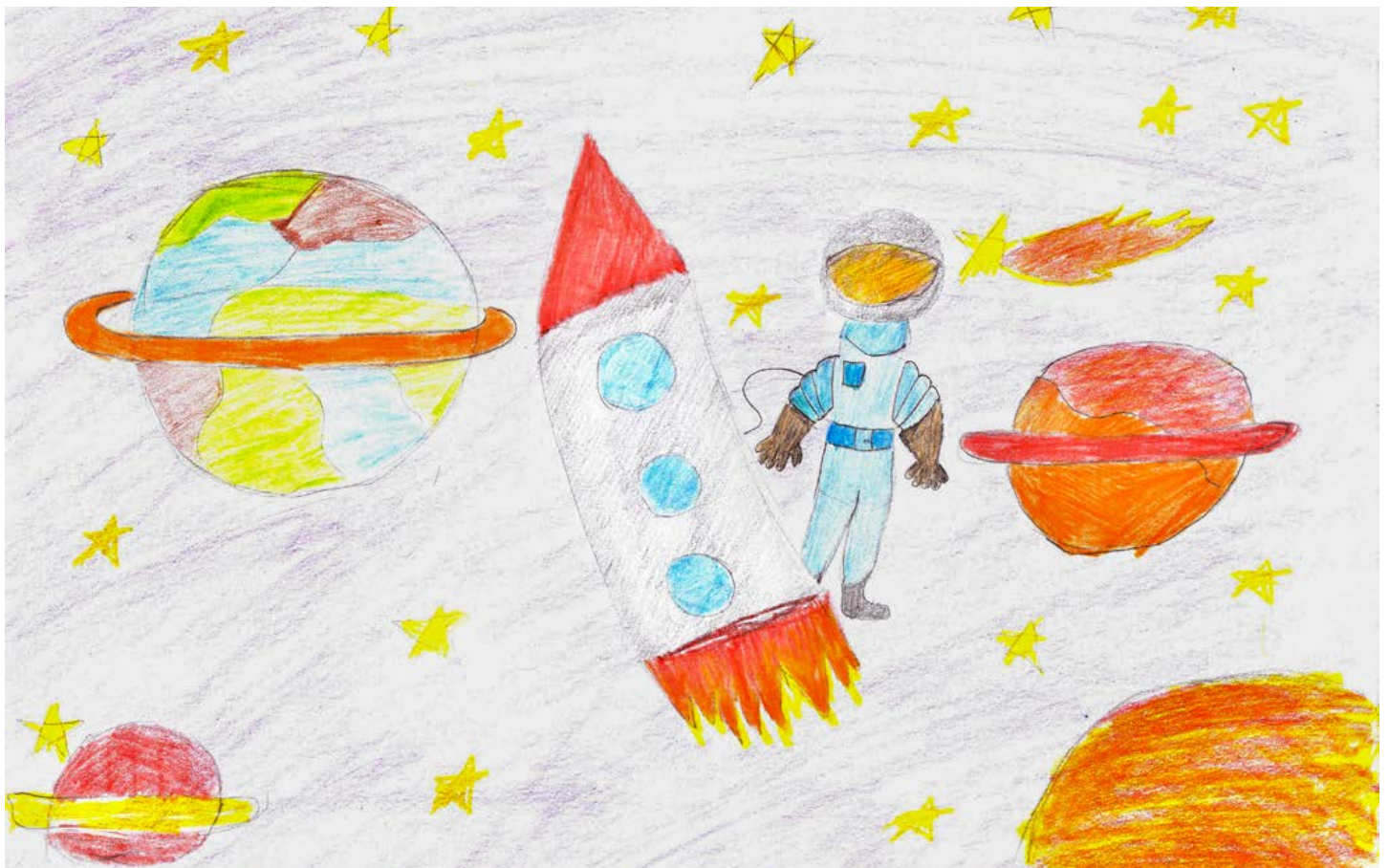
Yes

Nearest Tube stations

White City (Central Line); Wood
Lane (Circle and Hammersmith
& City Lines); Shepherd's Bush
Market (Circle and Hammersmith
& City Lines)

Bus routes

72, 95, 220, 228, 272, 283



School information

Details of academies, free schools and voluntary aided schools

Ark White City Primary Academy

Admissions criteria

The below criteria has been summarised and you will need to refer to the **school's website** [↗](#) for the full admission policy and arrangements.

Key: An asterisk (*) used below denotes that common definitions can be found on page 28.

Where there are more applications than the number of places available, the governing body will issue places according to the following order of priority:

1. Children Looked After*.
2. Children of staff where there is a demonstrable skills shortage. Priority will be limited to one place for each form of entry in any year.
3. Sibling*.
4. Children of staff who have been employed for two or more years. Priority will be limited to one place for each form of entry in any year.
5. Distance from home to school*.

Tie-break

If Ark Schools is unable to distinguish between applicants using the published criteria, including those who live in blocks of flats with the same building entrance, places will be offered via a random draw which will be supervised by someone independent of the academy.

Applications last year

Total of on-time applications submitted

75

How places were offered in 2024

1 place reserved for a pupil with an EHC plan

1 place held for a pupil repeating reception

Siblings: 13

Distance: 15 places offered (last distance 1.318 of a mile)

Appeals

Please refer to the school.

About our school

Ark White City Primary Academy opened in September 2023 in a brand new, multi-million-pound building in the heart of White City. Guided by our values of Excellence, Friendship, Courage and Determination, Ark White City Primary Academy strives to build a community committed to diversity, equity and inclusion.

Our new school building has state-of-the-art facilities including a roof terrace with growing gardens for each year group, a space for outside lessons and a high-quality playground area. It will also have a multi-purpose cooking, DT, science and art room and a sensory room. The school is designed with extra wide learning corridors which can be used as flexible breakout space from the classrooms. Co-located with the school is an On Side Youth Zone with amazing facilities which the students will have access to during the school day including an all-weather pitch, a drama studio, a four-court sports hall with a climbing wall, boxing room, a fully equipped gym, and multimedia suite including a recording studio.

School information

Details of academies, free schools and voluntary aided schools

Earl's Court Free School Primary

Cambridge Grove
London W6 0LB

☎ 020 8741 9967
✉ admin@wfs-primary.org
🌐 www.wfs-earlscourt.org

Type of school

Free school

DfE number

205 2004

Headteacher

Marianne Chapman

Admission number

30

Supplementary form

Yes. Only if you are applying under category 5

Visiting days

Please see the school's website

Nursery

No

Breakfast club

Yes

After-school club

Yes

School uniform

Yes

Nearest Tube stations

Ravenscourt Park (District Line);
Goldhawk Road (Circle and
Hammersmith & City Lines);
Hammersmith (Circle, District,
Hammersmith & City and
Piccadilly Lines)

Bus routes

27, 190, 266



School information

Details of academies, free schools and voluntary aided schools

Earl's Court Free School Primary

Admissions criteria

The below criteria has been summarised and you will need to refer to the **school's website** [↗](#) for the full admission policy and arrangements.

Key: An asterisk (*) used below denotes that common definitions can be found on page 28.

Where there are more applications than the number of places available, the governing body will issue places according to the following order of priority:

1. Children Looked After*.
2. Children whose parents have been given founder status.
3. Siblings*.
4. Children of the Earl's Court Free School Primary staff who have been employed for two or more years at the time at which the application for admission to the school is made or who have been recruited to fill a vacant post for which there is a demonstrable skill shortage.
5. Up to 9 children who are eligible for the pupil premium. If more than 9 children who apply are eligible for the pupil premium, priority will be given to those children who live nearest to the school, measured by straight-line distance, and unsuccessful applicants will be placed on the Reserve List. If fewer than 12 eligible children apply, the remaining places will be filled under criterion six.
6. After places have been filled under the first five criteria, half the remaining places will be offered to those children who live nearest to the site of the school on Cambridge Grove, measured by straight-line distance, and the other half will be offered to those children who live nearest to Earl's Court Tube station, measured by straight-line distance*.

Applications last year

Total number of on-time applications submitted
144

How places were offered in 2024

Pupil premium: 1

Siblings: 9

Distance: 5 places offered to the Hammersmith site (last distance offered 2.965 of a mile); 6 places offered to the Earls Court site (last distance offered 1.168 of a mile)

Appeals

Please refer to the school.

School information

Details of academies, free schools and voluntary aided schools

The Fulham Bilingual

60 Clancarty Road
London SW6 3AA

☎ 020 7736 5863

✉ admin@fulhambilingual.co.uk

🌐 www.fulhambilingual.org.uk

Type of school

Voluntary aided, bilingual.

A partnership between Holy Cross Catholic Primary and Marie D'Orliac

DfE number

205 9901

Executive Headteacher

Kathleen Williams

Head of School

Camille Grace

Admission number

28

Supplementary form

No

Visiting days

Please contact the school via email

Nursery

No

Breakfast club

No

After-school club

Yes

School uniform

Yes

Nearest Tube stations

Parsons Green (District Line);
Putney Bridge (District line);
Imperial Wharf (Overground)

Bus routes

22, 28, 295



School information

Details of academies, free schools and voluntary aided schools

The Fulham Bilingual

Admissions criteria

The below criteria has been summarised and you will need to refer to the **school's website** [↗](#) for the full admission policy and arrangements.

Key: An asterisk (*) used below denotes that common definitions can be found on page 28.

If there are more applicants than places, places will be offered in accordance with the following criteria in order of priority:

1. Children Looked After*.
2. Children of members of staff, who have completed two years of service at the time of application (i.e., teaching staff, support staff and anyone employed by the governing body).
3. Children who will have a sibling or siblings in the Holy Cross Bilingual section at the time of admission.
4. Multiple birth children, who have a same-aged sibling also applying for a place in FBL Holy Cross stream.
5. Children who will have a sibling or siblings in the FBL Holy Cross stream at the time of application.
6. All other admission by distance.

Exceptional need

The governing body will give top priority, after the category of Children Looked After, to an application where compelling evidence is provided at the time of application, from an appropriate professional such as doctor or social worker, of an exceptional social, medical, or other need of the child, which can only be met at this school. Applications will be considered on an individual basis.

Tie-break

Priority will be given to children living closest to the school determined by the shortest distance. In the event of distances being the same for two or more children where this would determine the last place to be allocated, random allocation will be carried out and supervised by an independent body.

Applications last year

Total number of on-time applications submitted
107

How places were offered in 2024

Siblings: 10

Distance: 18 (last distance offered 0.421 of a mile)

Appeals

Please refer to the school.

About our school

The Fulham Bilingual is a unique partnership between Holy Cross Catholic Primary, a state English school and L'Ecole Marie D'Orliac, a French private school. The children receive an immersive, bilingual education; the pupils learn half of the week in French and half of the week in English. The pupils will have two teachers: English and French.

Our bespoke curriculum ensures that the children learn objectives from both the French and English national curriculum meaning that they are prepared for either a French or English secondary school.

School information

Details of academies, free schools and voluntary aided schools

Fulham Primary School

Halford Road
London SW6 1JU

☎ 020 7385 0535
✉ admin@fulhampri.lbhf.sch.uk
🌐 www.fulhampri.lbhf.sch.uk

Type of school

Academy

DfE number

205 2286

Headteacher

John Lynch

Admission number

30

Supplementary form

No

Visiting days

Please contact the school

Nursery

Yes

Breakfast club

Yes

After-school club

Yes

School uniform

Yes

Nearest Tube stations

Fulham Broadway (District Line);
West Brompton (District Line
and Overground)

Bus routes

28, 74, 190, 391, 430



School information

Details of academies, free schools and voluntary aided schools

Fulham Primary School

Admissions criteria

The below criteria has been summarised and you will need to refer to the **school's website** [↗](#) for the full admission policy and arrangements.

Key: An asterisk (*) used below denotes that common definitions can be found on page 28.

Where there are more applications than the number of places available, places will be offered according to the following order of priority:

1. Children Looked After*.
2. Exceptional need*.
3. Siblings*.
4. Children of staff*.
5. Distance from home to school*.

Applications last year

Total number of on-time applications submitted
60

How places were offered in 2024
All on-time applicants were offered.

Appeals
No appeals were lodged.

School information

Details of academies, free schools and voluntary aided schools

Good Shepherd Catholic Primary School

35 Gayford Road
London W12 9BY

☎ 020 8743 5060
✉ sao1@goodshepherdrc.lbhf.sch.uk
🌐 www.goodshepherdrc.lbhf.sch.uk

Type of school

Voluntary aided, Catholic

DfE number

205 3602

Headteacher

Imogen Lavelle

Admission number

30

Supplementary form

Yes

Visiting days

Please contact the school

Nursery

Yes

Breakfast club

Yes

After-school club

Yes

School uniform

Yes

Nearest Tube stations

Ravenscourt Park (District Line);
Stamford Brook (District line)

Bus routes

207, 266



School information

Details of academies, free schools and voluntary aided schools

Good Shepherd Catholic Primary School

Admissions criteria

The below criteria has been summarised and you will need to refer to the **school's website** [↗](#) for the full admission policy and arrangements.

Key: An asterisk (*) used below denotes that common definitions can be found on page 28.

Where there are more applications than the number of places available, places will be offered according to the following order of priority:

1. Catholic Children Looked After*.
2. Baptised Catholic children with a Certificate of Catholic Practice.
 - a. Top priority will be given to siblings within this criteria.
 - b. Up to six places will be made available to Catholic children eligible for the pupil premium. Please note that any siblings within this category who are eligible for pupil premium will be included within the six available places.
 - c. Baptised Catholic Children whose parent is a qualified teacher who has been employed at The Good Shepherd Catholic Primary School for two or more years at the time of application and/or children of a member of staff who has been recruited to fill a vacancy for which there is a demonstrable skill shortage.
3. Baptised Catholic Children from Catholic families.
4. Other Children Looked After*.
5. Catechumens and members of an Eastern Christian Church.
6. Other Christian denominations with evidence from a minister.
7. Any other applicants.

In prioritising applications in each of the above oversubscription criteria, first priority will be given to siblings*.

Exceptional need*

The governing body will give top priority to an application where compelling evidence is provided at the time of application of an exceptional social, medical, pastoral or other need of the child, which can only be met at this school.

Tie-break

Where the offer of places to all the applicants in any of the categories listed above would lead to oversubscription, places up to the Published Admission Number of 30 will be offered to those whose home is nearest the school. This will be measured using a straight line (as the crow flies) measurement from the child's home 'address point' determined by Ordnance Survey data to the school main entrance gate on Gayford Road as determined by Hammersmith & Fulham Council using its computerised measurement system. 'Home' means the address at which the child resides for more than 50 per cent of the year.

Applications last year

Total number of on-time applications submitted
111

How places were offered in 2024

Siblings: 18 under criterion 2a

The last offer (of the total of 12) under criteria 2d was 0.370 of a mile

Appeals

Please refer to the school.

School information

Details of academies, free schools and voluntary aided schools

Greenside Primary School

Westville Road
London W12 9PT

☎ 020 8743 6421
✉ admin@greensideschool.org
🌐 www.greensideschool.org

Type of school

Academy

DfE number

205 2913

Head of School

Ms Philippa Saving

Admission number

30

Supplementary form

No

Visiting days

Please contact the school or visit their website

Nursery

Yes

Breakfast club

Yes

After-school club

Yes

School uniform

Yes

Nearest Tube stations

Goldhawk Road (Circle and Hammersmith & City Lines); Shepherd's Bush Market (Circle and Hammersmith & City Lines)

Bus routes

94, 237, 260, 266



School information

Details of academies, free schools and voluntary aided schools

Greenside Primary School

Admissions criteria

The below criteria has been summarised and you will need to refer to the **school's website** [↗](#) for the full admission policy and arrangements.

Key: An asterisk (*) used below denotes that common definitions can be found on page 28.

If there are more applications than places available, places will be offered according to the following order of priority:

1. Children Looked After*.
2. Exceptional need*.
3. Siblings on the date of application*.
4. Distance from home to school*.

Tie-break

Tie-break in any category will be determined by random allocation.

Applications last year

Total number of on-time applications submitted
115

How places were offered in 2024

1 place reserved for a child with an EHC plan

Siblings: 7

Distance: 22 (up to a distance of 0.408 of a mile)

Appeals

Please refer to the school.

About our school

We are a wonderful one-form entry school with a nursery based in the heart of Shepherd's Bush, West London.

At Greenside, we proudly inspire, nurture, and challenge our pupils through an innovative learning model of food, film, and fun. Our rich, diverse curriculum enables our pupils to express themselves as creative, independent, and resilient learners. Our aim is for all our pupils to be 'World Ready' and 'Test Ready' throughout their time with us. This is achieved through experiential, hands-on learning, where pupils are given opportunities to develop, grow and deepen their knowledge and understanding of the world.

We are dedicated to ensuring that we educate our pupils to understand that we are all change-makers and that the power to shape the future belongs not only to the few, but to us all.

School information

Details of academies, free schools and voluntary aided schools

Holy Cross Catholic Primary

Basuto Road
London SW6 4BL

☎ **020 7736 1447**
✉ **admin@holycrossrc.lbhf.sch.uk**
🌐 **www.holycrossfulham.org.uk**

Type of school

Voluntary aided, Catholic

DfE number

205 3354

Executive Headteacher

Kathleen Williams

Head of School

Mr Claude Gauci

Admission number

60

Supplementary form

Yes

Visiting days

Please contact the school

Nursery

Yes

Breakfast club

Yes

After-school club

Yes

School uniform

Yes

Nearest Tube stations

Parsons Green (District Line);
Putney Bridge (District Line)

Bus routes

14, 22, 414, 424



School information

Details of academies, free schools and voluntary aided schools

Holy Cross Catholic Primary

Admissions criteria

The below criteria has been summarised and you will need to refer to the **school's website** [↗](#) for the full admission policy and arrangements.

Key: An asterisk (*) used below denotes that common definitions can be found on page 28.

Where there are more applications than the number of places available, places will be offered according to the following order of priority:

1. Catholic Children Looked After* who have been adopted (or made subject to child arrangement orders or special guardianship orders) immediately following having been looked after (previously Children Looked After).
2. Baptised Catholic children with a Certificate of Catholic Practice who have a sibling* at the school at the time of admission.
3. Baptised Catholic children with a Certificate of Catholic Practice who are resident in the Parishes of Holy Cross or Our Lady of Perpetual Help.
4. Baptised Catholic children with a Certificate of Catholic Practice who are resident outside the parishes of Holy Cross and Our Lady of Perpetual Help.
5. Other Baptised Catholic children.
6. Other Children Looked After* and other children who have been adopted or made subject to child arrangement orders or special guardianship orders, immediately after having been looked after.
7. Children of Catechumens and members of the Eastern Christian Church.
8. Non-Catholic children who have a sibling on roll at the school at the time of admission.
9. Christians of other denominations whose application is supported either by a certificate of baptism or by a letter from their minister confirming membership of the faith community.
10. Any other children.

Exceptional need

The governing body will give top priority, after the appropriate category of Children Looked After, to an application where compelling evidence is provided at the time of application, from an appropriate professional such as doctor, priest or social worker, of an exceptional social, medical, pastoral or other need of the child, which can only be met at this school. Applications will be considered on an individual basis.

Staff members

The governing body will give second priority for children of members of staff, (i.e. teaching staff, support staff and anyone employed by the governing body who have completed two years of service at the time of application) after the appropriate category of Children Looked After.

Siblings

The attendance of a brother or sister at the school at the time of enrolment will increase the priority of an application within each category so that the application will be placed at the top of the category in which the application is made. Where the final place is offered to a child who has other siblings applying for a place in the same school year, these siblings will also be admitted.

Tie-break

Where the offer of places to all the applicants in any of the sub-categories listed above would still lead to oversubscription, the places up to the admission number will be offered to those living nearest to the school as measured by Hammersmith & Fulham Council.

School information

Details of academies, free schools and voluntary aided schools

Holy Cross Catholic Primary

Applications last year

Total number of on-time applications submitted

163

How places were offered in 2024

Children Looked After: 1

Siblings: 17 offered under criterion 2

Last offer under criterion 10 (up to a distance of 0.744 of a mile)

Appeals

Please refer to the school.

School information

Details of academies, free schools and voluntary aided schools

John Betts Primary

Paddenswick Road
London W6 0UA

☎ 020 8748 2465
✉ admin@johnbetts.lbhf.sch.uk
🌐 www.johnbetts.lbhf.sch.uk

Type of school
Voluntary aided

DfE number
205 3368

Headteacher
Jessica Mair

Admission number
30

Supplementary form
Yes

Visiting days
Please contact the school

Nursery
No

Breakfast club
Yes

After-school club
Yes

School uniform
Yes

Nearest Tube station
Ravenscourt Park (District Line)

Bus routes
94, 237, 306, 218



School information

Details of academies, free schools and voluntary aided schools

John Betts Primary

Admissions criteria

The below criteria has been summarised and you will need to refer to the **school's website** [↗](#) for the full admission policy and arrangements.

Key: An asterisk (*) used below denotes that common definitions can be found on page 28.

If there are more applications to the school than there are places available, allocation will be made in the following order of priority:

1. Children Looked After*.
2. Exceptional need*.
3. Siblings*.
4. Children of a member of teaching staff employed at the school at the time of the child's admission and/or children of a member of staff employed at the school at the time of the child's admission who has been recruited to fill a vacancy for which there is a demonstrable skill shortage.
5. Up to 6 places available to children eligible for Pupil Premium and who live the following area:
 - The south of Goldhawk Road, not including Goldhawk Road.
 - The north of the A4, not including the A4.
 - The west of Hammersmith Grove, not including Hammersmith Grove.
 - The east of Goldhawk Road and British Grove, but not including these roads.
6. Distance from home to school*.

Tie-break

Tie-break in any category will be determined by distance from home to school*.

Applications last year

Total number of on-time applications submitted
238

How places were offered in 2024

1 place reserved for a child with an EHC plan

Siblings: 11

Distance: 18 (up to a distance of 0.305 of a mile)

Appeals

Please refer to the school.

School information

Details of academies, free schools and voluntary aided schools

Langford Primary School

Gilstead Road
London SW6 2LG

☎ **020 7736 4045**
✉ **admin@langfordprimary.org.uk**
🌐 **www.langfordprimary.org.uk**

Type of school

Academy

DfE number

205 2005

Headteacher

Seamus Gibbons

Admission number

60

Supplementary form

No

Visiting days

Please contact the school

Nursery

Yes

Breakfast club

Yes

After-school club

Yes

School uniform

Yes

Nearest Tube stations

Imperial Wharf (Overground);
Parsons Green (District Line)

Bus routes

28, 295, 391, 424, C3, 306



School information

Details of academies, free schools and voluntary aided schools

Langford Primary School

Admissions criteria

The below criteria has been summarised and you will need to refer to the **school's website** [↗](#) for the full admission policy and arrangements.

Key: An asterisk (*) used below denotes that common definitions can be found on page 28.

If there are more applications than places available, allocations will be made in the following order of priority:

1. Children Looked After*.
2. Exceptional need*.
3. Siblings*.
4. Children of current staff and governors.
Children, including step children and foster children, of current staff and governors of Langford Primary School.
5. Distance from home to school*.

Applications last year

Total number of on-time applications submitted
112

How places were offered in 2024
All on-time applicants were offered.

Appeals
Please refer to the school.

School information

Details of academies, free schools and voluntary aided schools

Larmenier & Sacred Heart Catholic Primary School

41a Brook Green
London W6 7BL

☎ 020 8748 9444
✉ admin@larshrc.lbhf.sch.uk
🌐 www.larshrc.lbhf.sch.uk

Type of school

Voluntary aided, Catholic

DfE number

205 3649

Headteacher

Jennifer McGinty

Admission number

60

Supplementary form

Yes

Visiting days

Please visit the school's website

Nursery

Yes

Breakfast club

Yes

After-school club

Yes

School uniform

Yes

Nearest Tube stations

Hammersmith (Circle,
Hammersmith & City and
Piccadilly Lines); Kensington
Olympia (District Line and
Overground)

Bus routes

9, 23, 27, 306



School information

Details of academies, free schools and voluntary aided schools

Larmenier & Sacred Heart Catholic Primary School

Admissions criteria

The below criteria has been summarised and you will need to refer to the **school's website** [↗](#) for the full admission policy and arrangements.

Key: An asterisk (*) used below denotes that common definitions can be found on page 28.

Where there are more applications than the number of places available, places will be offered according to the following order of priority:

1. Catholic Children Looked After* and previously Children Looked After.
2. Catholic children with a Certificate of Catholic Practice, who are resident in the Parish of Brook Green.
3. Catholic children with a Certificate of Catholic Practice resident in other parishes.
4. Other Catholic children.
5. Other Children Looked After* and previously Children Looked After.
6. Children of catechumens and members of an Eastern Christian Church.
7. Children of other Christian denominations whose membership is evidenced by a minister of religion.
8. Children of other faiths whose membership is evidenced by a religious leader.
9. Any other children.

The governing body will give top priority within each category (1 to 9) in the following numerical order:

- a. Children who will have a sibling* in the school in September 2023.
- b. Children eligible for the Early Years Pupil Premium or the Pupil Premium.
- c. The proximity of the child's home to the school.

Applications last year

Total number of on-time applications submitted
163

How places were offered in 2024

Siblings: 13 under criterion 2; 9 under criterion 3; and 6 under Pupil Premium Grant 2, 3 and 4

Last offer under criterion 4c (up to a distance of 0.327 of a mile)

Appeals

Please refer to the school.

About our school

Larmenier & Sacred Heart is a vibrant school with a strong sense of community. The school's Catholic identity permeates all aspects of the learning environment, and prayer and worship are a central part of school life.

Pupils are enthusiastic, engaged learners and are encouraged to work imaginatively, collaboratively and creatively. As a school, we are committed to excellence in all aspects of learning and strive to provide an education that enables all children to realise their full potential.

School information

Details of academies, free schools and voluntary aided schools

Queen's Manor Primary School

Lysia Street
London SW6 6ND

☎ **020 7385 4343**
✉ **admin@queensmanor.lbhf.sch.uk**
🌐 **www.queensmanor.lbhf.sch.uk**

Type of school

Academy

DfE number

205 2484

Headteacher

Phoebe du Parcq

Admission number

30

Supplementary form

No

Visiting days

Please contact the school

Nursery

Yes

Breakfast club

Yes

After-school club

Yes

School uniform

Yes

Nearest Tube stations

Barons Court (District and Piccadilly Lines); Hammersmith (Circle, Hammersmith & City, District and Piccadilly Lines)

Bus routes

74, 220, 424, 430



School information

Details of academies, free schools and voluntary aided schools

Queen's Manor Primary School

Admissions criteria

The below criteria has been summarised and you will need to refer to the **school's website** [↗](#) for the full admission policy and arrangements.

Key: An asterisk (*) used below denotes that common definitions can be found on page 28.

Where there are more applications than the number of places available, places will be offered according to the following order of priority:

1. Children Looked After*.
2. Exceptional need*.
3. Siblings*.
4. Children of staff*.
5. Distance from home to school*.

Applications last year

Total number of on-time applications submitted
50

How places were offered in 2024
All on-time applicants were offered.

Appeals
Please refer to the school.

School information

Details of academies, free schools and voluntary aided schools

St Augustine's Catholic Primary

Disbrowe Road
London W6 8QE

☎ 020 7385 4333
✉ admin@staugustinesrc.lbhf.sch.uk
🌐 www.staugustinesrc.lbhf.sch.uk

Type of school

Catholic Academy (part of the St John Southworth Catholic Academy Trust)

DfE number

205 3378

Headteacher

Mr Martin Kincaid

Admission number

30

Supplementary form

Yes

Visiting days

Please contact the school

Nursery

No

Breakfast club

No

After-school club

No

School uniform

Yes

Nearest Tube stations

Barons Court (Piccadilly and District Lines), West Brompton (District Line)

Bus routes

74, 190, 430



School information

Details of academies, free schools and voluntary aided schools

St Augustine's Catholic Primary

Admissions criteria

The below criteria has been summarised and you will need to refer to the **school's website** [↗](#) for the full admission policy and arrangements.

Key: An asterisk (*) used below denotes that common definitions can be found on page 28.

Where there are more applications than the number of places available, places will be offered according to the following order of priority:

1. Catholic Children Looked After and previously Children Looked After*.
2. Baptised Catholic children with a Certificate of Catholic Practice, who have a brother or sister at the school at the time of admission.
3. Baptised Catholic children whose parent is a qualified teacher who has been employed at St Augustine's Catholic Primary School for two or more years at the time of application and/or children of a member of staff who has been recruited to fill a vacancy for which there is a demonstrable skill shortage.
4. Baptised Catholic children with a Certificate of Catholic Practice, who are resident within the parish boundaries of St Augustine's Hammersmith.
5. Other baptised Catholic children with a Certificate of Catholic Practice.
6. Other baptised Catholic children.
7. Other Children Looked After and previously Children Looked After*.
8. Catechumens and members of an Eastern Christian Church.
9. Children of other Christian faiths e.g. Church of England.
10. Any other children.

Exceptional need*

The governing body will give top priority, within a category, to an application where compelling evidence is provided at the time of application, from an appropriate professional such as a doctor,

priest or social worker, of an exceptional social, medical, pastoral or other need of the child, which can only be met at this school.

Offers in the past few years

For the past three years the governing body has been unable to offer places to any applicants beyond oversubscription criterion 4. Whilst the school welcomes applications from all categories, it is usually oversubscribed with Catholic candidates.

Tie-break

Where the offer of places to the applicants in any of the categories listed above would exceed the number of places available, the places up to the admission number will be offered to those living nearest to the school as measured in a straight line from the applicant's home address point to the school address point using a computerised mapping system. The measurement will be conducted by the Local Authority (LA) using its computerised measuring system. If two or more applications are received from the same block of flats, the applicant with the lower door number will be classed as nearest and offered a place because they are likely to be closer to the ground floor and, therefore, the school. In the event of distances being the same for two or more children where this would determine the last place to be allocated, random allocation will be carried out by the local authority's computerised allocation system.

Applications last year

Total number of on-time applications submitted

69

How places were offered in 2024

Siblings: 7 offered under criteria 2

Last offer under criterion 10 (up to a distance of 1.442 of a mile)

Appeals

There were no appeals lodged.

School information

Details of academies, free schools and voluntary aided schools

St John XXIII Primary School

1 India Way
London W12 7QT

☎ 020 8743 9428
✉ admin@stjohnxxiii.lbhf.sch.uk
🌐 www.stjohnxxiii.lbhf.sch.uk

Type of school

Voluntary aided, Catholic

DfE number

205 3645

Headteacher

Karen Cunningham

Admission number

60

Supplementary form

Yes

Visiting days

Please contact the school

Nursery

Yes

Breakfast club

Yes

After-school club

Yes

School uniform

Yes

Nearest Tube stations

White City (Central Line); Wood Lane (Circle and Hammersmith & City Lines); Shepherd's Bush Market (Circle and Hammersmith & City Lines)

Bus routes

283, 228, 95, 207, 607, 260, 220



School information

Details of academies, free schools and voluntary aided schools

St John XXIII Primary School

Admissions criteria

The below criteria has been summarised and you will need to refer to the **school's website** [↗](#) for the full admission policy and arrangements.

Key: An asterisk (*) used below denotes that common definitions can be found on page 28.

Where there are more applications for places than the number of places available, places will be offered according to the following order of priority:

1. Catholic Children Looked After and previously Children Looked After*.
2. Catholic children who are resident in the parish(es) of White City and East Acton.
3. Other Catholic children.
4. Other Children Looked After and previously Children Looked After.
5. Catechumens and members of an Eastern Christian Church.
6. Children of other Christian denominations whose membership is evidenced by a minister of religion.
7. Children of other faiths whose membership is evidenced by a religious leader.
8. Any other children.

Within each category applicants with a sibling* in the school at the time of admission will have priority.

Exceptional need*

The governing body will give top priority after the appropriate category of Children Looked After to an application where compelling evidence is provided at the time of application of an exceptional social, medical, pastoral or other need of the child, which can only be met at this school.

Tie-break

Tie-break in any category will be determined by distance from home to school*.

Applications last year

Total number of on-time applications submitted
89

How places were offered in 2024

All on-time applicants were offered.

Appeals

Please refer to the school.

About our school

We are a member of the Saint John Southworth Catholic Academy Trust and a feeder school for the Cardinal Vaughan Memorial School, an Ofsted Outstanding secondary school in Holland Park.

School information

Details of academies, free schools and voluntary aided schools

St John's Walham Green C of E Primary School

Filmer Road
London SW6 6AS

☎ 020 7731 5454
✉ admin@stjohnsce.lbhf.sch.uk
🌐 www.stjohnsce.lbhf.sch.uk

Type of school

Voluntary aided, Church of England

DfE number

205 3463

Headteacher

Mrs Hannah Abu-Ghaida

Admission number

60

Supplementary form

Yes

Visiting days

Please contact the school

Nursery

Yes

Breakfast club

Yes

After-school club

Yes

School uniform

Yes

Nearest Tube stations

Parsons Green (District Line);
Putney Bridge (District Line)

Bus routes

14, 424



School information

Details of academies, free schools and voluntary aided schools

St John's Walham Green C of E Primary School

Admissions criteria

The below criteria has been summarised and you will need to refer to the **school's website** [↗](#) for the full admission policy and arrangements.

Key: An asterisk (*) used below denotes that common definitions can be found on page 28.

Overriding priority will be given to Children Looked After*. The remaining places will be split on the basis of 70 per cent foundation places for those who are practising Christians, and 30 per cent open places. Siblings will be placed into the applicable category.

Foundation places

Places will be offered according to the following criteria, which are listed in order of priority:

1. Children whose families are committed *regular* members of the congregation at St John with St James, Walham Green – by '*regular*' we mean a minimum of twice a month for 18 months.
2. Children whose families are committed *regular* members of a Church of England church in the Deanery of Hammersmith and Fulham – by '*regular*' we mean a minimum of twice a month for 18 months.
3. Children whose family are committed *regular* members of another Church of England church outside the deanery of Hammersmith and Fulham – by '*regular*' we mean a minimum of twice a month for 18 months.
4. Children who are *regular members of another Christian denomination* and who live within a mile of the school – by '*members*' in category 4, we mean membership conferred by baptism (or dedication in churches that do not practise infant baptism); and by '*another Christian denomination*' we mean those who are members of or affiliated to Churches together in Britain and Ireland (CTBI) or the Evangelical Alliance.

The school will seek a reference from the applicant's parish priest or minister by parent/s completing a Supplementary Information Form. In each category, priority will be given to children with a sibling already attending the school.

Once the Foundation places have been filled, all remaining applications are considered Open places.

Open places

Places will be offered according to the following criteria, which are listed in order of priority:

1. Siblings of children who will be on roll at the time of attendance.
2. Children living nearest the school measured by the straight-line distance from home to school.

Notes

- Should there be vacancies in either category the places will be filled in order from the other category.
- For the purposes of this policy the word 'sibling' is defined as brother or sister, half brother or sister, stepbrother or sister or foster child. The child must be living with the same parent/carer at the same address as the child already at St John's School. The older child must still be attending the school when the younger sibling joins the school.

Tie-break

In the event of there being insufficient vacancies to admit all applicants in any of the categories listed above, priority will be given to children whose parents/legal guardians' residential address is the shortest distance from the school's main entrance in Filmer Road, when measured in a straight line.

School information

Details of academies, free schools and voluntary aided schools

St John's Walham Green C of E Primary School

Applications last year

Total number of on-time applications submitted

141

How places were offered in 2024

Siblings: 11 (open criteria only)

Foundation: 19 (all foundation applicants were offered)

Open: 30 (last distance offered was 0.614 of a mile)

Appeals

Please refer to the school.

About our school

St John's Walham Green C of E Primary School is a fun, warm and welcoming primary school, with an inclusive environment. In summer 2024 we were graded as 'outstanding' by Ofsted. Our pupil outcomes are consistently above both local authority and national averages.

All elements of life at St John's are informed by our School Vision which include among others:

- Celebrating difference
- Enjoying adventure
- Rejoicing with our church and community
- Having confidence in ourselves, thriving together in care and love.

Our school vision is rooted in the Gospel of John 13:34-35, which commands us to 'Love one another'.

We have high expectations for every pupil, academically, spiritually and socially. We offer an enriched, well-structured and creative curriculum which engages pupils and inspires a love of learning. Our extra-curricular offer is strong, particularly for music and sport. We continually strive to give children positive, memorable experiences and opportunities which will enable them to grow and flourish.

School information

Details of academies, free schools and voluntary aided schools

St Mary's Catholic Primary School

Masbro Road
London W14 0LT

☎ **020 7603 7717**
✉ **admin@stmarysrc.lbhf.sch.uk**
🌐 **www.stmarysrc.lbhf.sch.uk**

Type of school

Voluntary aided, Catholic

DfE number

205 3529

Headteacher

Miss Lucy Black

Admission number

30

Supplementary form

Yes

Visiting days

Please refer to the school's website

Nursery

Yes

Breakfast club

Yes

After-school club

Yes

School uniform

Yes

Nearest Tube stations

Shepherd's Bush (Central Line and Overground); Kensington Olympia (District Line and Overground); Hammersmith (Circle, Hammersmith & City, District and Piccadilly Lines)

Bus routes

23, 49, 72, 220, 283, 295, C1



School information

Details of academies, free schools and voluntary aided schools

St Mary's Catholic Primary School

Admissions criteria

The below criteria has been summarised and you will need to refer to the **school's website** [↗](#) for the full admission policy and arrangements.

Key: An asterisk (*) used below denotes that common definitions can be found on page 28.

Where there are more applications for places than the number of places available, places will be offered according to the following order of priority:

1. Catholic Children Looked After and previously Children Looked After*.
2. Catholic children resident in the Parish of Holy Trinity, Brook Green, or for whom St Mary's is the nearest Catholic school.
3. Other Catholic children.
4. Other Children Looked After or previously Children Looked After.
5. Catechumens and members of an Eastern Christian Church whose application is supported by a baptism certificate and/or letter of entry into the order of catechumens.
6. Christians of other denominations whose application is supported by either a certificate of baptism or by a letter from their minister confirming membership of the faith community.
7. Children of other faiths whose application is supported by a letter from their Religious Leader confirming membership of the faith community.
8. Any other applicants.

Exceptional need*

The governing body will give top priority after the appropriate category of Children Looked After to an application where compelling evidence is provided at the time of application of an exceptional social, medical, pastoral or other need of the child, which can only be met at this school.

Tie-break

Tie-break in any category will be determined by distance from home to school*.

Applications last year

Total number of on-time applications submitted
73

How places were offered in 2024

All on-time applicants were offered.

Appeals

No appeals were lodged.

About our school

Our one-form entry school is a very happy, supportive and welcoming environment, where children are at the very centre of all that we do.

We are a nurturing school where there is a strong sense of community. We aim to provide a balanced and creative education in a stimulating and safe environment where all children, regardless of their starting point, can maximise their talents and abilities. We encourage them to develop pride in their achievements and feel happy, confident and secure as part of a friendly, inclusive and caring community.

Our mission 'Growing in God's love and care' ensures that we learn together, valuing the uniqueness of each individual. We are a thriving Catholic school in the heart of Brook Green, open to all faiths and none.

School information

Details of academies, free schools and voluntary aided schools

St Paul's C of E Primary School

Worldige Street
London W6 9BP

☎ **020 8748 4951**
✉ **enquiries@stpaulsce.lbhf.sch.uk**
🌐 **www.stpaulsprimary.org**

Type of school

Voluntary aided, Church of England

DfE number

205 3566

Executive Head

Mrs Tonnie Read

Head of School

Mrs Siobhan Johnston

Admission number

30

Supplementary form

Yes

Visiting days

Please contact the school

Nursery

Yes

Breakfast club

Yes

After-school club

Yes

School uniform

Yes

Nearest Tube station

Hammersmith (Circle,
Hammersmith & City, District
and Piccadilly Lines)

Bus routes

9, 23, 27, 72, 220, 391



School information

Details of academies, free schools and voluntary aided schools

St Paul's C of E Primary School

Admissions criteria

The below criteria has been summarised and you will need to refer to the **school's website** [↗](#) for the full admission policy and arrangements.

Key: An asterisk (*) used below denotes that common definitions can be found on page 28.

Where there are more applications for places than the number of places available, places will be offered according to the following order of priority:

1. Children Looked After*.
2. Sibling*.
3. Church places. After the first two criteria have been decided, 50 per cent of the remaining places will be offered in the following order to children who, with their parent/parents or guardian/guardians:
 - 3.1. regularly worship at St Paul's Church, Hammersmith.
 - 3.2. regularly worship at another Christian church and live within the Deanery of Hammersmith & Fulham.
4. Open places. The remaining 50 per cent will be given to children who live nearest the school and live within the Deanery of Hammersmith & Fulham.
5. Any remaining places will be offered to children who live nearest the school*.

Applications last year

Total number of on-time applications submitted
54

How places were offered in 2024

All on-time applicants were offered.

Appeals

Please refer to the school.

About our school

St Paul's C of E Primary is a small, friendly school with a warm Christian ethos. We benefit from an attractive and well-resourced learning environment, a large outside space – including a beautiful woodland area – and a large staff team.

We are passionate about the whole curriculum and the development of oracy, reading and vocabulary. We want our children to live together harmoniously; become creative learners and act as responsible citizens in the future.

School information

Details of academies, free schools and voluntary aided schools

St Peter's C of E Primary School

33 St Peter's Road
London W6 9BA

☎ 020 8748 7756
✉ admin@stpetersce.lbhf.sch.uk
🌐 www.stpetersce.lbhf.sch.uk

Type of school

Voluntary aided, Church of England

DfE number

205 3578

Headteacher

Karen Frazer

Admission number

30

Supplementary form

Yes

Visiting days

Please contact the school

Nursery

No

Breakfast club

Yes

After-school club

Yes

School uniform

Yes

Nearest Tube stations

Stamford Brook (District Line);
Ravenscourt Park (District Line)

Bus routes

27, 190, 267, 391



School information

Details of academies, free schools and voluntary aided schools

St Peter's C of E Primary School

Admissions criteria

The below criteria has been summarised and you will need to refer to the **school's website** [↗](#) for the full admission policy and arrangements.

Key: An asterisk (*) used below denotes that common definitions can be found on page 28.

Where there are more applications for places than the number of places available, places will be offered according to the following order of priority:

Children with an EHC plan*

The governors will admit any children offered a place at St Peter's through the separate process which admits those with an EHC plan, which specifically name the school.

Children Looked After and previously Children Looked After*

The governors will give the highest priority to Children Looked After, including those previously Looked After.

Children of staff

The governors will give priority to the children of a member of staff who has been employed at the school for two or more years at the time of application, or a member of staff who has been recruited to fill a vacancy for which there is a demonstrable skill shortage.

Remaining places

A maximum of two thirds of the remaining places will be offered as foundation places, after which all applications will be considered for open places taking no account of Christian commitment.

Of all the foundation places and open places offered, a maximum of three children eligible for the Pupil Premium Grant (PPG) who, at the closing date, are living within a three quarter-mile radius of the school, will be given priority, and placed first according to the below F1 to F4 and O1 to O2 categories.

Please note that any siblings eligible for the PPG will be included within the three available places. Children admitted to the school with EHC plans who are eligible for the PPG, Children Looked After and all previously Children Looked After will not be included within the three available places.

Foundation places

A child may be considered for a foundation place if his/her parent(s) are practising members of a Christian church. The school will seek supportive evidence of this from the applicant's parish priest or minister.

If there are more applications with a supportive church reference than foundation places available, then candidates will be ranked as follows:

- F1. Practising member of a Church of England church + sibling in the school at the time of application and at the proposed date of entry.
- F2. Practising member of other Christian church + sibling in the school at the proposed date of entry.
- F3. Practising member of Church of England church.
- F4. Practising member of other Christian church.

Open places

After the foundation places have been allocated, the remaining candidates will be considered under the open place category and ranked as follows:

- O1. Sibling in the school at the time of application and at the proposed time of entry.
- O2. All other candidates.

School information

Details of academies, free schools and voluntary aided schools

St Peter's C of E Primary School

Oversubscription in any of the above categories

If there is a need to sort between applications in any of the above categories, then the governors will do so using the criteria listed below in order of priority:

1. Children with social/medical needs: The governors may on an individual basis give priority to applicants who can demonstrate that admission to St Peter's C of E Primary School is necessary on the grounds of a professionally supported medical or social need of the child. Any such support statement or report must be dated within six months of the date of application.
2. Children who live closest to the school as determined by the tie-break procedure: This method of sorting between applications will be used only when there is over-subscription within any of the categories, F1 to F4 and O1 to O2, in stated priority order.

Priority is not given to the children of governors.

Applications last year

Total number of on-time applications submitted
165

How places were offered in 2024

Siblings: 13 (Foundation: 12 and Open: 1)

Foundation: 19 offers including 12 siblings (last offer under criterion 3 at a distance of 0.526 of a mile)

Open: 11 offers (last offer to a sibling at a distance of 0.247 of a mile)

Appeals

Please refer to the school.

School information

Details of academies, free schools and voluntary aided schools

St Stephen's C of E Primary School

Uxbridge Road
London W12 8LH

☎ 020 8743 4483
✉ admin@ststephensce.lbhf.sch.uk
🌐 www.ststephensce.lbhf.sch.uk

Type of school

Voluntary aided, Church of England

DfE number

205 3600

Headteacher

Michael Schumm

Admission number

60

Supplementary form

Yes

Visiting days

Most Tuesdays at 9.45am.
Please contact the school office
on 020 8743 4483 to book a
place on a school tour

Nursery

Yes

Breakfast club

Yes

After-school club

Yes

School uniform

Yes

Nearest Tube stations

Shepherd's Bush Market (Circle
and Hammersmith & City Lines);
Goldhawk Road (Circle and
Hammersmith & City Lines)

Bus routes

72, 148, 207, 260, 283



School information

Details of academies, free schools and voluntary aided schools

St Stephen's C of E Primary School

Admissions criteria

The below criteria has been summarised and you will need to refer to the **school's website** [↗](#) for the full admission policy and arrangements.

Key: An asterisk (*) used below denotes that common definitions can be found on page 28.

The governors hope that all parents who have chosen this school have done so knowing that it is a Church of England school with a distinctive Christian ethos. Governors therefore expect parents to give their full support to the ethos of the school. Governors hope that all children will attend the acts of collective worship and will take part in the religious education curriculum offered by the school. This does not in any way remove the right that parents have to request that their children be withdrawn from these activities.

We encourage applications from all local families, including those of other faiths or no faith.

The school is a two form entry primary school. Applicants with a signed Statement of Special Educational Needs or an Education, Health & Care plan that specifically names St Stephen's will be admitted in accordance with Section 43 of the Children and Families Act 2014. Should there be more applications than places available, the governors of St Stephen's have agreed to offer (after Children Looked After* and siblings*), in proportion, 67 per cent foundation places and 33 per cent open places.

Note that where there is a need to round numbers, we will favour foundation places.

Places will be offered against the following criteria for admission to the school, in order:

1. Children Looked After*, i.e. children in public care. This includes children who were previously looked after, but ceased to be so because they have been adopted or became subject to a residential order or special guardianship order.
2. Siblings* – children who will have a sibling attending the main school at the point of entry.

Foundation places

1. St Stephen's Church Reference + parish resident: the child and its family are practising members of the congregation at St Stephen and St Thomas Shepherd's Bush and live in the parish. The school will seek a supportive Christian reference from the applicant's parish priest.
2. Church Reference: the child and its family are practising members of a Christian church. The school will seek a supportive Christian reference from the applicant's parish priest.

Open places

Open places are determined by distance: Proximity of the applicant's home to the school, which will be determined by straight line distance measured using the local authority's computerised measuring system. Should there be more than one child with the same distance the decision will be made by the drawing of lots, and the process will be independently verified.

School information

Details of academies, free schools and voluntary aided schools

St Stephen's C of E Primary School

Allocation of places

The governors will prioritise children who satisfy the governors of medical or social needs, which can be met by the school. A professional assessment of any special needs should be presented in a letter from the applicant's general practitioner, social worker, medical consultant or other appropriate body and must be enclosed with the application form.

The governors will also prioritise children who have one or more parent who is a member of staff at St Stephen's. To be eligible, a parent must be directly employed by the school and either have been employed for two or more years at the time of application, or have been recruited to fill a vacant post for which there is a demonstrable skill shortage.

After this, applicants under each criterion will be prioritised by the proximity of the applicant's home to the school, determined by straight line distance measured using the local authority's computerised measuring system. Should there be more than one child with the same distance the decision will be made by the drawing of lots, and the process will be independently verified.

Applications last year

Total number of on-time applications submitted
202

How places were offered in 2024

2 places allocated for children with an EHC plan

Siblings: 31 (17 foundation and 14 open)

Foundation: 40 offers including 17 siblings (last offer under criterion 3 at a distance of 0.563 of a mile)

Open: 18 offers including 14 siblings (last offer under open criterion 2 at a distance of 0.080 of a mile)

Appeals

Please refer to the school.

School information

Details of academies, free schools and voluntary aided schools

St Thomas of Canterbury

Estcourt Road
London SW6 7HB

☎ 020 7385 8165
✉ admin@stthomasrc.lbhf.sch.uk
🌐 www.stthomasrc.lbhf.sch.uk

Type of school

Voluntary aided, Catholic

DfE number

205 3648

Executive Head

K Wyatt

Head of School

Jo Breslin

Admission number

30

Supplementary form

Yes

Visiting days

Tours are available in term
time Wednesdays at 9am and
Thursdays at 4pm

Nursery

Yes

Breakfast club

Yes

After-school club

Yes

School uniform

Yes

Nearest Tube stations

Fulham Broadway (District Line);
Parsons Green (District line);
West Brompton (District Line)

Bus routes

28, 74, 190, 211, 295, 391, 430



School information

Details of academies, free schools and voluntary aided schools

St Thomas of Canterbury

Admissions criteria

The below criteria has been summarised and you will need to refer to the **school's website** [↗](#) for the full admission policy and arrangements.

Key: An asterisk (*) used below denotes that common definitions can be found on page 28.

Where there are more applications for places than the number of places available, places will be offered according to the following order of priority:

1. Catholic Children Looked After* and Catholic children.
2. Baptised Catholic children.
3. Previously Children Looked After including adopted children.
4. Children of Catechumens and members of an Eastern Christian church.
5. Any other children.

Multiple births

When the last offer is made to a child of a multiple birth i.e. twin, triplets etc., the remaining child/children will also be offered a place, even though it will mean exceeding the published admission number.

Exceptional need*

The governing body will give top priority, after the appropriate category of Children Looked After, to an application where compelling evidence is provided at the time of application, from an appropriate professional such as a doctor, priest or social worker, of an exceptional social, medical, pastoral or other need of the child, which can only be met at this school.

Applications last year

Total number of on-time applications submitted
52

How places were offered in 2024

All on-time applicants were offered.

Appeals

No appeals were lodged.

About our school

St Thomas of Canterbury is a thriving Catholic primary school located in the heart of Fulham. We are a friendly and diverse school, and we celebrate all that our families and staff bring with them to our community. Our Catholic ethos underpins everything that we do, and we are proud that "Jesus is at the heart of everything we think, do and say." Through this approach we are able to develop the whole child – academically, socially, spiritually and emotionally.

We have high aspirations for all of our children and we aim to help each of them become lifelong learners, and more importantly, valuable and well-rounded members of society. We are proud of our many achievements and the enrichment opportunities we offer our pupils.

Being in partnership with the Saint John Southworth Catholic Trust, enables us to work collaboratively and share expertise across the curriculum. Please come and visit us to see our bright and exciting learning space by emailing us today!

School information

Details of academies, free schools and voluntary aided schools

Sullivan Primary School

**Peterborough Road
London SW6 3BN**

☎ 020 7736 5869
✉ admin@sullivan.lbhf.sch.uk
🌐 www.sullivanprimaryschool.co.uk

Type of school

Academy

DfE number

205 2577

Headteacher

Wendy Aldridge

Admission number

30

Supplementary form

No

Visiting days

Please contact the school

Nursery

Yes

Breakfast club

Yes

After-school club

Yes

School uniform

Yes

Nearest Tube stations

Parsons Green (District Line);
Putney Bridge (District Line)

Bus routes

22, 424



School information

Details of academies, free schools and voluntary aided schools

Sullivan Primary School

Admissions criteria

The below criteria has been summarised and you will need to refer to the **school's website** [↗](#) for the full admission policy and arrangements.

Key: An asterisk (*) used below denotes that common definitions can be found on page 28.

Where there are more applications than the number of places available, the governing body will issue places according to the following order of priority:

1. Children Looked After*.
2. Exceptional need*.
3. Siblings*.
4. Children of staff*.
5. Distance from home to school*.

Applications last year

Total number of on-time applications submitted

54

How places were offered in 2024

All on-time applicants were offered.

Appeals

Please refer to the school.

About our school

We are a successful and vibrant school in the heart of Parson's Green, Fulham. Our children thrive in our nurturing environment with teachers that are passionate about their education and personal development. We have high expectations for learning therefore our class and specialist teachers plan a curriculum that stimulates and challenges children across a broad range of subjects.

We have a tradition of drawing on the learning opportunities and well-being benefits of being outdoors and amongst nature. Our outdoor learning programme gives children high quality access to our spacious outdoor areas; a meadow, wildlife garden, pond and kitchen garden.

The values of kindness, tolerance and resilience are at the heart of everything we do. We invest in the character development of our children so that they have confidence, high aspirations and grow to be responsible citizens who show respect and compassion for others.

School information

Details of academies, free schools and voluntary aided schools

The London Oratory School Junior House

Seagrave Road
London SW6 1RX

☎ 020 7385 0102
✉ admin@los.ac
🌐 www.london-oratory.org

Type of school

Voluntary aided, Catholic

DfE number

205 5400

Headteacher

Daniel Wright MA

Admission number

20

Supplementary form

Yes

Visiting days

Please contact the school

Nursery

No

Breakfast club

Yes

After-school club

Yes

School uniform

Yes

Nearest Tube stations

Fulham Broadway (District Line);
West Brompton (District Line
and Overground)

Bus routes

14, 11, 41



School information

Details of academies, free schools and voluntary aided schools

The London Oratory School Junior House

Overview

The school admits up to 20 Catholic boys at age seven for a specialist music education.

Applications last year

How places were offered in 2024

20 places offered.

Please contact the school directly for offer breakdown information.

Appeals

There were five appeals. None were successful.

School information

Details of academies, free schools and voluntary aided schools

Thomas's Academy

New King's Road
London SW6 4LY

☎ **020 7736 2318**
✉ **info@academy.thomas-s.co.uk**
🌐 **www.academy.thomas-s.co.uk**

Type of school

Academy

DfE number

205 2309

Executive Headteacher

Miles Chester

Associate Headteacher

Suzanne Kelly

Admission number

30

Supplementary form

No

Visiting days

Please contact the school

Nursery

Yes

Breakfast club

Yes

After-school club

Yes

School uniform

Yes

Nearest Tube stations

Parsons Green (District Line);
Putney Bridge (District Line)

Bus routes

14, 22, 414, 424



School information

Details of academies, free schools and voluntary aided schools

Thomas's Academy

Admissions criteria

The below criteria has been summarised and you will need to refer to the **school's website** [↗](#) for the full admission policy and arrangements.

Key: An asterisk (*) used below denotes that common definitions can be found on page 28.

Where there are more applications than the number of places available, the governing body will issue places according to the following order of priority:

1. Children Looked After*.
2. Exceptional need*.
3. Siblings*.
4. For up to 15 places, a preference will be given to children who are already attending Thomas's Academy Nursery at the time of their reception application. If there are more than 15 nursery pupils applying, then priority will be given to applicants who live nearest the school on the basis described in paragraph 5 below. A maximum of 15 places will be allocated in this manner, after which all other applications from existing nursery pupils will be prioritised in the same manner as any other application.

If in any of the categories 1, 2, 3 or 4 there are more applicants than there are places available, priority will be given to applicants who live nearest the school on the basis described in paragraph 5 below. If there are two or more applicants in categories 1, 2, 3 or 4 who live at exactly the same distance from the school, the offer of a place will be decided by random allocation.

5. Distance from home to school*.

Applications last year

Total number of on-time applications submitted
95

How places were offered in 2024

1 place allocated for a child with an EHC plan

Siblings: 4

Nursery children: 6 (up to a distance of 3.170 of a mile)

Distance: 3 (last offer at a distance of 1.518 of a mile)

Appeals

Please refer to the school.

About our school

Thomas's Academy delivers a partnership between the independent and maintained sectors. Established to invigorate to an outstanding level all that is already good at a thriving community school.

At Thomas's Academy, we practice and celebrate a set of core values: kindness, courtesy, honesty, respect, independence, confidence, leadership and humility. Our approach is based on Four Cornerstones: Be Kind – Learn to Learn – Think Globally – Create Beauty.

Thomas's Academy is an inclusive, caring environment supporting the next generation to reach their potential through evidence based approaches to education.

School information

Details of academies, free schools and voluntary aided schools

West London Free School Primary

Cambridge Grove
London W6 0LB

☎ 020 8741 9967
✉ admin@wlfs-primary.org
🌐 www.wlfs-primary.org

Type of school

Free school

DfE number

205 2001

Headteacher

Marianne Chapman

Admission number

60

Supplementary form

Yes. Only if you are applying under category 5

Visiting days

Please see the school's website

Nursery

No

Breakfast club

Yes

After-school club

Yes

School uniform

Yes

Nearest Tube stations

Hammersmith (Circle, Hammersmith & City, District and Piccadilly Lines); Ravenscourt Park (District Line)

Bus routes

27, 190, 266



School information

Details of academies, free schools and voluntary aided schools

West London Free School Primary

Admissions criteria

The below criteria has been summarised and you will need to refer to the **school's website** [↗](#) for the full admission policy and arrangements.

Key: An asterisk (*) used below denotes that common definitions can be found on page 28.

Where there are more applications than the number of places available, the governing body will issue places according to the following order of priority:

1. Children Looked After*.
2. Children whose parents have been given founder status; and where their children are not yet old enough to attend the West London Free School Primary, the parents continue to play a significant and ongoing role in the school.
3. Children who will have siblings* in the West London Free School (primary or secondary) at the time when they are admitted to the school.
4. Children of the West London Free School Primary staff who have been employed for two or more years at the time at which the application for admission to the school is made or who have been recruited to fill a vacant post for which there is a demonstrable skill shortage.
5. Up to 18 children who are eligible for pupil premium. If more than 18 children who apply are eligible for pupil premium, priority will be given to those children who live nearest to the school, measured by straight-line distance, and unsuccessful applicants will be placed on the reserve list. If fewer than 18 eligible children apply, the remaining places will be filled under criterion six.
6. After places have been filled under the first five criteria, the remaining places will be offered to those children who live nearest to the school, measured as a straight-line distance*.

Applications last year

Total number of on-time applications submitted
249

How places were offered in 2024

Siblings: 14

Pupil premium: 6

Open: 46 (last distance offered 0.728 of a mile)

Appeals

Please refer to the school.

Additional information



Additional information

Support services

Family Hubs

www.lbhf.gov.uk/thefamilyhub

H&F Family Hubs provide free activities and support for families and residents that include among others:

- After school clubs
- Health and development reviews
- Youth clubs
- Speech and language therapy
- Housing advice
- Mental health services.

The hubs are located in three different areas of the borough, and also run sessions in libraries, community centres and children centres. The **Family Hubs website** [promotes a network of services that includes:](#)

Start for Life

A programme of support from pregnancy to 36 months. Email familyhubs@lbhf.gov.uk [or](#) call 020 8753 6070.

Local Offer for SEND

Information for children and young people from birth to 25 who have SEND, and their families. Email localoffer@lbhf.gov.uk [or](#)

Family Information Service

Childcare information, including help with childcare costs. Email fis@lbhf.gov.uk [or](#) call 0845 313 3933.

Youth hub

Information for young people including, community youth projects, courses, job opportunities, mentoring sessions and young carers. Email familyhubs@lbhf.gov.uk [or](#) call 020 8753 6070.

Children with an EHC plan

[020 8753 1021](tel:02087531021)

send@lbhf.gov.uk

If your child already has an EHC plan, the information relating to the application process set out in this brochure does not apply to you as the local authority needs to work with you to agree the best place for your child. To discuss these arrangements, please contact the EHC Planning Service on 020 8753 1021 or send@lbhf.gov.uk [or](#)

Support for school attendance

www.lbhf.gov.uk/fss

[020 8753 6600](tel:02087536600)

After you have been allocated a school place, making sure your child attends school regularly and on time every day is really important, not only to make sure they have the best possible chance to get the most out of their education but also because children who are not in school are more likely to get into trouble outside school or be vulnerable. Parents have a legal responsibility to get their children to school, but if you are having difficulties with this, it is important you talk to school staff, who are there to help you.

You or school staff may feel you need some extra help. Hammersmith & Fulham Council has professional staff who work with families and with children who are not attending school. They are based in the Early Help Service and can be contacted on 020 8753 6600. This multi-disciplinary team will work with schools, children and parents to improve children's school attendance and reduce unnecessary absence and truancy.

There is also a central team – the ACE Team – located on the 3rd Floor, 145-155 King Street, contact 07741 985404. The ACE team concentrate on the following areas of work: statutory action in relation to school attendance (issuing penalty notices or processing legal action on behalf of schools for entrenched non-attendance, when Early Help are not involved), child employment and children in entertainment, elective home education and children missing education.

In-year admissions

www.lbhf.gov.uk/schooladmissions

[020 8753 1085](tel:02087531085)

An in-year admission is when an application for a school place needs to be made outside the normal admission round (the first year of entry to a school). In most cases your reason for making an application will be you have moved to a new address, moved from abroad or you would like to transfer your child from one school to another. There is a separate process for applying in-year for a school place.

Additional information

Support services

Disabled Children's Team

☎ 020 8753 3321

This team offers information, advice, support and practical help to families with children who have a permanent and substantial disability or long-term illness that affects their everyday living.

The team offers advice on how to access services available for children and young people who have disabilities. The initial way to contact the team is through the duty social worker who is available on 020 8753 3321, from 9am to 5pm.

Family Information Service (FIS)

📄 www.lbhf.gov.uk/fisd

☎ 0845 313 3933

The Family Information Service (FIS) provides a statutory information service to prospective parents, parents, carers, guardians, children and young people up to their 20th birthday.

The service offers accurate, impartial information and guidance on childcare, activities for children and young people, and other children's and young people's services in Hammersmith & Fulham.

The FIS holds information on Ofsted-registered childcare, as well as holiday provision and services for young people and general information including help with childcare costs, healthy eating and parenting support. Other available information includes:

- out-of-school childcare and play: details of clubs providing childcare and play activities for five to 12-year-olds in your area
- schools: lists of primary and secondary schools, information on home education and independent schools
- leisure: swimming classes, soft play, dance, music, sport, library story time, martial arts and other information on activities for children and young people
- special needs: support groups and services for children and young people aged up to 25
- support groups for parents and carers: contact details for local support groups such as children's centres.

Educational Psychology Service

☎ 020 8753 6604

Every school has a link educational psychologist (EP) – a specialist in how children, young people and young adults develop and learn.

Schools have a limited amount of free access to an EP to support them to manage Special Educational Needs processes and systems. In addition schools can buy in school visits from their link EP.


Help may be asked for when pupils show difficulties with their social-emotional development (including wellbeing/mental health), behaviour, learning or progress generally in school. EPs can only directly work with a named pupil if parents/carers give informed consent. Parents/carers themselves may ask for their help through the school.

EPs can also provide general consultative support and guidance for groups or school wide issues as well as research and training.


Assistance with home-to-school travel


📄 www.lbhf.gov.uk/schooladmissions

☎ 020 8753 1085

All children under 16 in full-time education can travel free on bus and tram services. All school pupils will be required to carry a Zip Oyster photocard to travel free on buses and trams. For further information, please visit the Transport for London (TfL) website at www.tfl.gov.uk 

It is expected children who are resident in Hammersmith & Fulham make use of the concessions offered by TfL, including free travel across London. However, there may be circumstances where travel assistance is required outside the scope of free arrangements offered by TfL. In this instance, Hammersmith & Fulham Council will take account of the statutory requirements.

The full policy and application form are available at www.lbhf.gov.uk/schooladmissions  or by contacting the admissions team.

The admissions team will be able to advise if your child will qualify for a travel support grant. Contact 020 8753 1085 or email school.admissions@lbhf.gov.uk 

Additional information

Support services

Free school meals and school clothing grants

📄 www.lbhf.gov.uk/contact_counciltax_benefits

☎ 020 8753 6681 (option 4)

For information about and to apply for free school meals and school clothing grants please complete the form at: www.lbhf.gov.uk/studentbenefits 📄

For further advice, you can contact the team by emailing benefits@lbhf.gov.uk 📧 or calling 020 8753 6681 (option 4) between 9am and 5pm.

Schools also receive additional funding from the central government based on the number of students registered for free school meals (£1,320 per student for primary schools and £900 per student for secondary schools). This money funds valuable support like extra tuition, additional teaching staff or after school activities. We encourage all families who think they may be eligible to apply for these benefits.

Eligibility

Your children qualify for free school meals and/or clothing grants to buy school uniforms if you receive any of the qualifying benefits:

- Income Support
- Income-based Job Seekers Allowance
- Income-related Employment and Support Allowance
- Guaranteed Pension Credit

- You are supported under the National Asylum Seekers Support System (NASS)
- Child Tax Credit, but not Working Tax Credit and have an annual taxable income of less than £16,190
- Universal Credit (provided you have an annual net earned income of no more than £7,400).

All infant age pupils (reception year 1 and 2) in state-funded schools are also eligible for free school meals.

More information on clothing grants

Clothing grant rates are £31 for children aged four to seven before 1 September of the current year.

If you live outside Hammersmith & Fulham, you should apply to your own authority. The criteria for qualifying for clothing grants are the same as listed above for free school meals entitlement.

Universal Credit transitional protection

Pupils currently receiving free school meals will continue to receive them while Universal Credit is rolled out. This will apply even if your earnings rise above the new threshold during that time.

Once Universal Credit is fully rolled out, pupils receiving free school meals but who no longer qualify for them because your earnings have risen above the new threshold will continue to receive them until the end of their current phase of education (primary or secondary).



Nurseries and early years



Nurseries and early years

Starting nursery school in H&F

Information and how to apply

Attending a nursery school or class gives your child a valuable introduction to school. It provides children with the opportunity to develop their skills and mix with girls and boys of their own age.

Hammersmith & Fulham Council will ensure a free or subsidised nursery place is available for three- and four-year-olds in the borough. In addition to the free places provided in our own nursery schools and classes, funded part-time places are available in private, voluntary and independent sector nurseries and pre-schools, giving parents a range of provision to choose from. This funding is called the “three- and four-year-old offer” – visit www.lbhf.gov.uk for details.

Nursery schools and primary school nursery classes admit children after their third birthday. Check with your nursery or school for details of their own admission arrangements.

A list of private, voluntary and independent sector nursery schools and pre-schools, including details of which ones offer the three- and four-year-old funding, is available from the Family Information Service (FIS). The service provides impartial information and advice on the range of services in the borough for children and young people. You can get advice on how to choose the type of childcare or early years service that best suits your needs and those of your child. Up-to-date lists with contact details are available for child-minders, nurseries, pre-schools, crèches, after-school care, holiday play schemes, children’s centres, parent and toddler groups and activities for children and young people.

Call 0845 313 3933 or email fis2@lbhf.gov.uk or alternatively look online at the FIS directory at www.lbhf.gov.uk/fisd for full listings.

How places are allocated

If you wish to apply for a nursery place, contact the school or centre for an application form. The decision whether your child is admitted to a community nursery school or class is taken by the headteacher, who makes offers according to the admissions criteria. The criteria used are the same as those for community primary schools (see page 30).

Voluntary aided or church schools make their own decisions about who should be admitted to the nursery, based on their published admissions criteria. Details are available from the headteacher. Contact details for voluntary aided schools can be found from page 56.

Community nursery schools and early years centres

Bayonne Nursery School part of The Thames Federation

Head: Anne-Marie Strachan
Address: 50 Paynes Walk, W6 8PF

☎ 020 7385 5366
✉ admin@bayonne.lbhf.sch.uk
🌐 www.bayonne.lbhf.sch.uk

James Lee Nursery part of The Thames Federation

Head: Anne-Marie Strachan
Address: Gliddon Road, W14 9BH

☎ 020 8741 8877
✉ admin@jameslee.lbhf.sch.uk
🌐 www.jameslee.lbhf.sch.uk

Randolph Beresford Early Years Centre

Head: Michele Barrett
Address: Australia Road W12 7PH

☎ 020 8743 7339
✉ admin@randolphberesford.lbhf.sch.uk
🌐 www.vanessanurseryschool.org.uk

Vanessa Nursery School

Head: Michele Barrett
Address: 14 Cathnor Road W12 9JA

☎ 020 8743 8196
✉ admin@vanessa.lbhf.sch.uk
🌐 www.vanessanurseryschool.org.uk

Nursery school locations

For nursery locations refer to the map on pages 123 to 125.

Locations and contacts



Locations and contacts

Other authorities

Contact details for diocesan authorities

The Diocese of Westminster Education Service and London Diocesan Board for Schools provide additional information about education in Catholic and Church of England schools respectively.

Diocese of Westminster Education Service (Catholic)

- 📄 education.rcdow.org.uk
- ✉ education@rcdow.org.uk
- ☎ 020 7798 9005

London Diocesan Board for Schools (Church of England)

- 📄 www.l dbs.co.uk
- ☎ 020 7932 1100

Contacting neighbouring boroughs

Detailed information about schools outside of Hammersmith & Fulham, is available directly from schools or the local authority in which they are situated. Contact details are provided on the following page.

Please remember to check the admission arrangements for your preferred schools to assess whether you are likely to be offered a place. You may also be required to complete a supplementary form.

If you live outside Hammersmith & Fulham but wish to apply for a school in the borough, you will need to apply on the common application form of the local authority where you live.



Locations and contacts

Other authorities

Contact details for neighbouring boroughs

Brent

- www.brent.gov.uk/admissions
- school.admissions@brent.gov.uk
- 020 8937 3110

Ealing

- www.ealing.gov.uk
- mainroundadmissions@ealing.gov.uk
- 020 8825 5511/020 8825 5522

Hounslow

- www.hounslow.gov.uk/admissions
- admissions@hounslow.gov.uk
- 020 8583 2721

Kensington and Chelsea

- www.rbkc.gov.uk
- school.admissions@rbkc.gov.uk
- 020 7745 6432

Richmond upon Thames

- www.richmond.gov.uk
- richmond.admissions@achievingforchildren.org.uk
- 020 8547 5569

Wandsworth

- www.wandsworth.gov.uk/admissions
- admissions@wandsworth.gov.uk
- 020 8871 7316

Westminster

- www.westminster.gov.uk
- schooladmissions@westminster.gov.uk
- 020 7745 6433



Locations and contacts

H&F schools, nurseries and early years centres

School locations

Listed below are Hammersmith & Fulham's educational establishments, grouped by type of school and then in alphabetical order. Each school's location is pinpointed on the map on page 125.

Community primary schools

- 1 Addison Primary School**
Addison Gardens W14 0DT
- 2 Avonmore Primary School**
Avonmore Road W14 8RL
- 3 Brackenbury Primary School**
Dalling Road W6 0BA
- 4 Flora Gardens Primary School**
Temporary site: Lena Gardens W6 7PZ
- 5 Kenmont Primary School**
Valliere Road NW10 6AL
- 6 Melcombe Primary School**
Fulham Palace Road W6 9ER
- 7 Miles Coverdale Primary School**
Coverdale Road W12 8JJ
- 8 Normand Croft Community School**
Bramber Road W14 9PA
- 9 Old Oak Primary School**
Mellitus Street W12 0AS
- 10 Sir John Lillie Primary School**
Lillie Road SW6 7LN
- 11 Wendell Park Primary School**
Cobbold Road W12 9LB
- 12 Wormholt Park Primary School**
Bryony Road W12 0SR

Primary academies and free schools

- 13 Ark Bentworth Primary Academy**
Bentworth Road W12 7AJ
- 14 Ark Conway Primary Academy**
Hemlock Road W12 0QT
- 15 Ark White City Primary Academy**
EdCity Walk, W12 7PT
- 16 Earl's Court Free School Primary**
Cambridge Grove W6 0LB
- 17 Fulham Primary School**
Halford Road SW6 1JU
- 18 Greenside Primary School**
Westville Road W12 9PT
- 19 Langford Primary School**
Gilstead Road SW6 2LG
- 20 Queen's Manor Primary School**
Lysia Street SW6 6ND
- 21 Sullivan Primary School**
Peterborough Road SW6 3BN
- 22 Thomas's Academy**
New King's Road SW6 4LY
- 23 West London Free School Primary**
Cambridge Grove W6 0LB

Locations and contacts

H&F schools, nurseries and early years centres

Voluntary aided primary schools

- 24 All Saints C of E Primary School**
Bishops Avenue SW6 6ED
- 25 Good Shepherd Catholic Primary School**
Gayford Road W12 9BY
- 26 Holy Cross Catholic Primary School**
Basuto Road SW6 4BL
- 27 John Betts Primary School**
Paddenswick Road W6 0UA
- 28 Larmenier and Sacred Heart Catholic Primary School**
41a Brook Green W6 9BL
- 29 St Augustine's Catholic Primary School**
Disbrowe Road W6 8QE
- 30 St John XXIII Primary School**
1 India Way W12 7QT
Formerly Pope John Catholic Primary School
- 31 St John's Walham Green C of E Primary School**
Filmer Road SW6 6AS
- 32 St Mary's Catholic Primary School**
Masbro Road W14 0LT
- 33 St Paul's C of E Primary School**
Worldige Street W6 9BP
- 34 St Peter's C of E Primary School**
33 St Peter's Road W6 9BA
- 35 St Stephen's C of E Primary School**
Uxbridge Road W12 8LH
- 36 St Thomas of Canterbury Catholic Primary School**
Estcourt Road SW6 7HB
- 37 The London Oratory School – Junior House**
Seagrave Road SW6 1RX
Note that this school does not form part of the primary admissions process, applications are made directly to the school

Voluntary aided primary bilingual schools

- 38 The Fulham Bilingual**
Clancarty Road SW6 3AA
Affiliated with Holy Cross Catholic Primary School (location 26 on the map)

Community nursery schools and early years centres

- 39 Bayonne Nursery**
50 Paynes Walk W6 8PF
- 40 James Lee Nursery School**
Gliddon Road W14 9BH
- 41 Randolph Beresford Early Years Centre**
Australia Road W12 7PH
- 42 Vanessa Nursery School**
Cathnor Road W12 9JA

Special educational needs schools

- 43 Cambridge School (age 11 to 16)**
61 Bryony Road W6 0LB
- 44 The TBAP Courtyard Academy (age 5 to 11)**
Marinefield Road SW6 2LL
- 45 Jack Tizard School (age 5 to 11)**
South Africa Road W12 7PA
- 46 Miles Coverdale School Language Impairment Unit (age 5 to 11)**
Coverdale Road W12 8JJ
- 47 Queen's Manor Primary School Learning Difficulties Unit (age 5 to 11)**
Lysia Street SW6 6ND
- 48 Queensmill School (age 3 to 19)**
Askham Road W12 0NW
- 49 Woodlane High School (age 11 to 16)**
Du Cane Road W12 0TN

Locations and contacts

H&F schools, nurseries and early years centres

Secondary schools

- 50 Ark Burlington Danes Academy**
Wood Lane W12 0HR
Academy, Church of England, mixed aged 11 to 18
- 51 Fulham Cross Girls' School**
Munster Road SW6 6BP
Academy, girls aged 11 to 16.
Part of the Fulham College Academy Trust
- 52 Fulham Cross Academy**
Kingwood Road SW6 6SN
Academy, mixed aged 11 to 16.
Part of the Fulham College Academy Trust
- 53 Hammersmith Academy**
Cathnor Road W12 9JD
Academy, mixed aged 11 to 18
- 54 Hurlingham Academy**
Peterborough Road SW6 3ED
Federation Academy, mixed aged 11 to 18
- 55 Lady Margaret School**
Parsons Green SW6 4UN
Academy, Church of England, girls aged 11 to 18
- 56 Phoenix Academy**
The Curve W12 0RQ
Academy, mixed aged 11 to 18
- 57 Sacred Heart High School**
Hammersmith Road W6 7DG
Academy, Catholic, girls aged 11 to 18
- 58 The Fulham Boys School**
532 Fulham Road SW6 5BD
Free school, boys aged 11 to 16
- 59 The London Oratory School**
Seagrave Road SW6 1RX
Academy, Catholic, boys aged 11 to 18
(mixed sixth form)
- 60 West London Free School**
King Street W6 9LP
Free school, mixed aged 11 to 18
- 61 William Morris Sixth Form**
St Dunstan's Road W6 8RB
Provision for students aged 16 to 19.
Note that this school provides sixth form provision only and is not part of the secondary admissions process

Locations and contacts

H&F schools, nurseries and early years centres



© Crown copyright. Unauthorised reproduction infringes Crown copyright and may lead to prosecution or civil proceedings. L.B. HAMMERSMITH & FULHAM Licence No. LA100019223 2006. This map is based upon Ordnance Survey material with the permission of the Ordnance Survey on behalf of the Controller of Her Majesty's Stationery Office.

Apply online: [www.lbhf.gov.uk/ eadmissions](http://www.lbhf.gov.uk/eadmissions)

The Pan-London eAdmissions site opens
on 1 September 2024.

If your child was born between 1 September
2020 and 31 August 2021, you will need to
apply for a primary (reception) school place
by 15 January 2025.

For further information contact:

Admissions Team

3rd Floor, 145-155 King Street, London W6 9XY

Telephone: 020 8753 1085

Email: school.admissions@lbhf.gov.uk

www.lbhf.gov.uk/schooladmissions



© Hammersmith & Fulham Council September 2024
Design and accessibility: staffordtilley.co.uk

The information provided in this brochure is correct at the time of going to print in September 2024. The admissions process and school admission arrangements are set out in accordance with the current Admissions Code (issued December 2014), Section 84 of the School Standards and Framework Act 1998. Any corrections, updates and additions will be published on our website: www.lbhf.gov.uk/schooladmissions

Photo credits: Pages 13, 15, 17, 19, 23, 63, 65, 80, 95, 107, 111 © iStock; pages 40, 71, 78, 84 © Hammersmith & Fulham Council

On the cover: Pupils from St John's Walham Green C of E Primary, photo courtesy of the school. Other photos courtesy of the following schools: Ark Bentworth Primary Academy (pages 5, 10, 27, 59); St John's Walham

Green C of E Primary (pages 6, 90, 113); Greenside Primary (pages 9, 73, 117); Addison Primary (pages 25, 32); Brackenbury Primary (pages 28, 36); Sir John Lillie Primary (pages 29, 50); Flora Gardens Primary (pages 31, 38); Avonmore Primary (page 34); Melcombe Primary (page 42); Miles Coverdale Primary (page 44); Normand Croft Community (pages 46, 119, 120); Old Oak Primary (page 48); Wendell Park Primary (page 52); Wormholt Park Primary (page 54); St Thomas of Canterbury Catholic Primary (pages 56, 103); All Saints C of E Primary (page 57); Ark Conway Primary Academy (pages 61, 116); The Fulham Bilingual (page 67); Fulham Primary (page 69); Holy Cross Catholic Primary (page 75); Larmenier & Sacred Heart Catholic Primary (page 82); St Augustine's Catholic Primary (page 86); St John XXIII Primary (page 88); St Mary's Catholic Primary (page 93); St Peter's C of E Primary (page 97); St Stephen's C of E Primary (page 100); Sullivan Primary (page 105); Thomas's Academy (page 109)